



20/4 Myella Drive BERRIEDALE TAS

2 1 1

This is a great opportunity to purchase an entry level property as your first home or investment.

The unit is currently rented until February 2022 to a long-term tenant at \$320pw.

Situated on the first floor at the end of the complex and offers full sun and natural light large lounge/dining and balcony. Galley style kitchen, combined bathroom, laundry and toilet.

The unit is located close to the Claremont to Hobart cycle and walking track given you a short level walk to Claremont Plaza and all services.

Please call to arrange your inspection

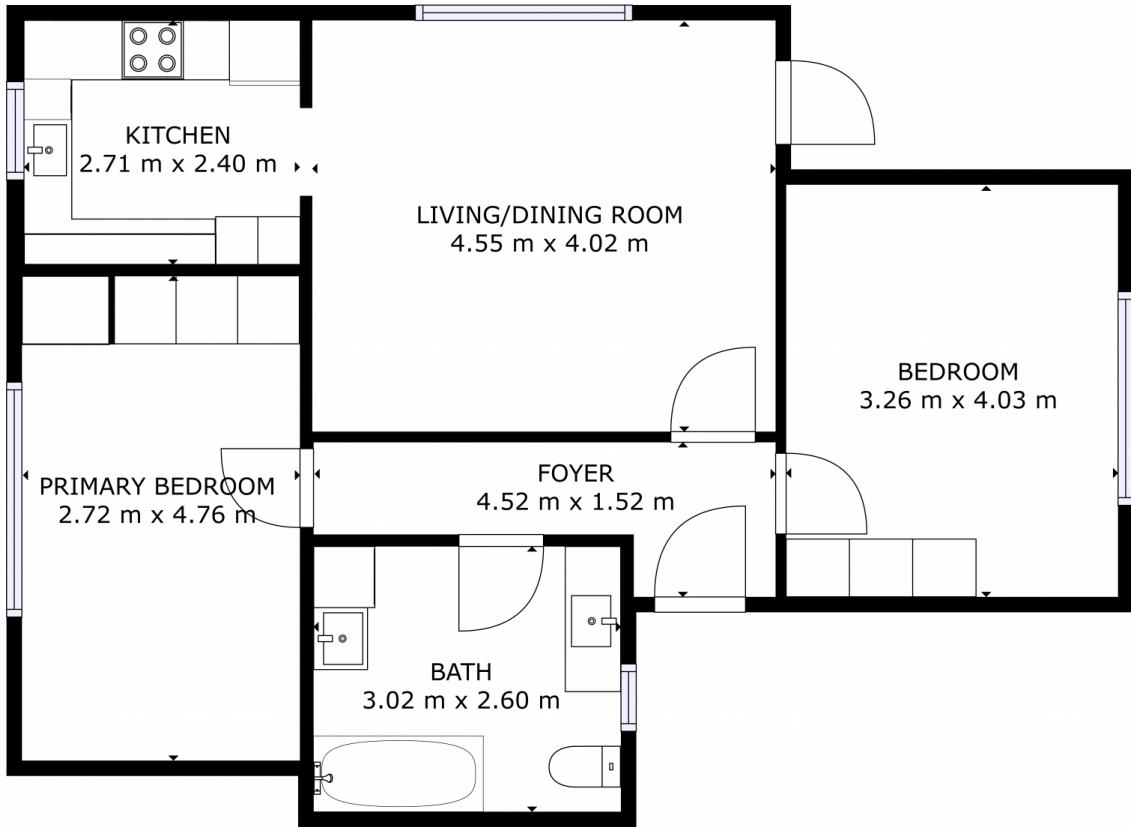
Disclaimer:

All care has been taken by 4one4 Real Estate and 4one4 Media House when compiling the marketing material and information in this presentation. We cannot guarantee the

Price : \$ 335,000
Building Size : 70 sqm
Land Size : 70 sqm
View : <https://www.4one4.com.au/property/204-myella-drive-berriedale-tas/6700998>



Paul Berry
0362 737 414



GROSS INTERNAL AREA
FLOOR 1: 66 m²
TOTAL: 66 m²

SIZES AND DIMENSIONS ARE APPROXIMATE, ACTUAL MAY VARY.

4ONE4.
PROPERTY CO.

FLOOR 1