



5 Moondah Drive Berriedale TAS

2 1 1

As the famous line goes, "follow your dreams?". So, there's no other direction to take than going to 5 Moondah Drive in the heart of Berriedale--because this property is the ultimate home of your dream!

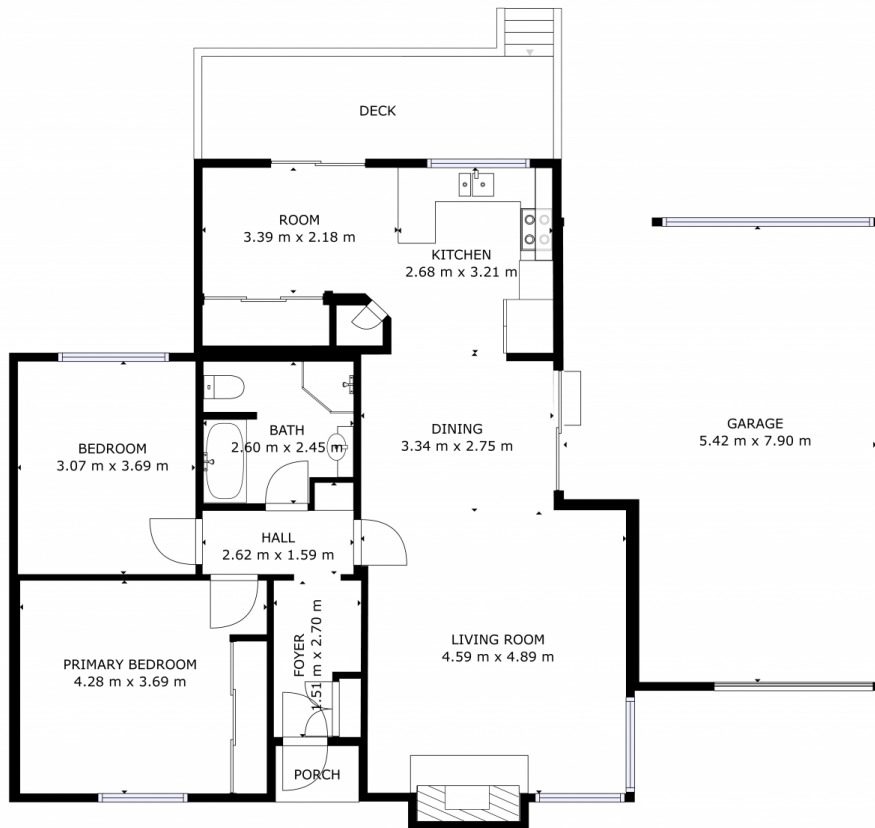
This stunning home will certainly take your breath away upon inspection. To preserve its warmth and beauty, it has been recently renovated for the new owners to enjoy. Pampered with natural light, the exterior paints a thousand positive impressions. From a generous open space, the neutral-based colours greatly complement the astounding views. A new roof and external cladding of imitation weatherboard were also installed to complete this masterpiece.

As you start to explore the house, a hallway that you can freely customise will welcome you from the entrance door

Price : \$ 495,000
Building Size : 134 sqm
Land Size : 0.05 ha
View : <https://www.4one4.com.au/property/5-moondah-drive-berriedale-tas/6762267>



Laurie Gray
0362 737 414



GROSS INTERNAL AREA
FLOOR 1: 95 m², EXCLUDED AREAS:
GARAGE: 39 m²
TOTAL: 95 m²

SIZES AND DIMENSIONS ARE APPROXIMATE, ACTUAL MAY VARY.

FLOOR 1

4ONE4.
PROPERTY CO.