



1254 Gordon River Road WESTERWAY TAS

2 1 8

An exceptional opportunity is now being presented in 1254 Gordon River Road in Westerway - at an attainable price point for all. Westerway has always been the gateway to Tasmania's Stunning World Heritage Wilderness Area, Mountfield National Park, Maydena Gravity Mountain bike community and is an ideal stop for those on the way to experience some exceptional fishing and views on the Tyenna River, Lake Pedder & Gordon or to duck out to Meadowbank Dam for recreational boating and water skiing!! The development opportunity (STCA) for this stunning flat parcel of land with over 15,000 square metres on the main highway is endless.

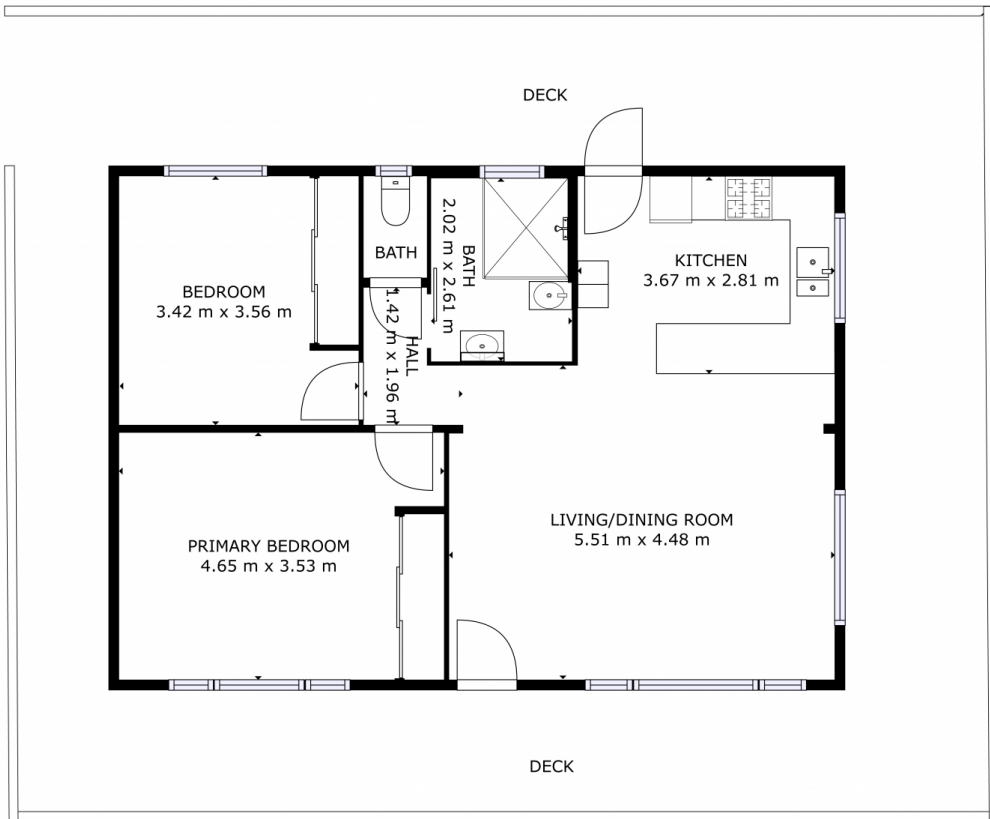
This 2-bedroom weatherboard home was relocated in 2015. It is well built, cosy and should be very low

[For full version visit the website](#)

Type : Acreage/Semi-Rural
Price : \$ 435,000
Building Size : 74 sqm
Land Size : 15180 sqm
View : <https://www.4one4.com.au/property/1254-gordon-river-road-westerway-tas/6796184>



Patrick Berry
 0262 727 444



GROSS INTERNAL AREA
 FLOOR 1: 74 m²
 TOTAL: 74 m²

SIZES AND DIMENSIONS ARE APPROXIMATE, ACTUAL MAY VARY.

FLOOR 1

4ONE4.
 PROPERTY CO.