



13 Elf Avenue Glenorchy TAS

3 1 1

Are you fond of a classic? Or you're more into modern and basic? Well, you need not choose between the two because you can enjoy the best of both worlds with 13 Elf Avenue, Glenorchy!

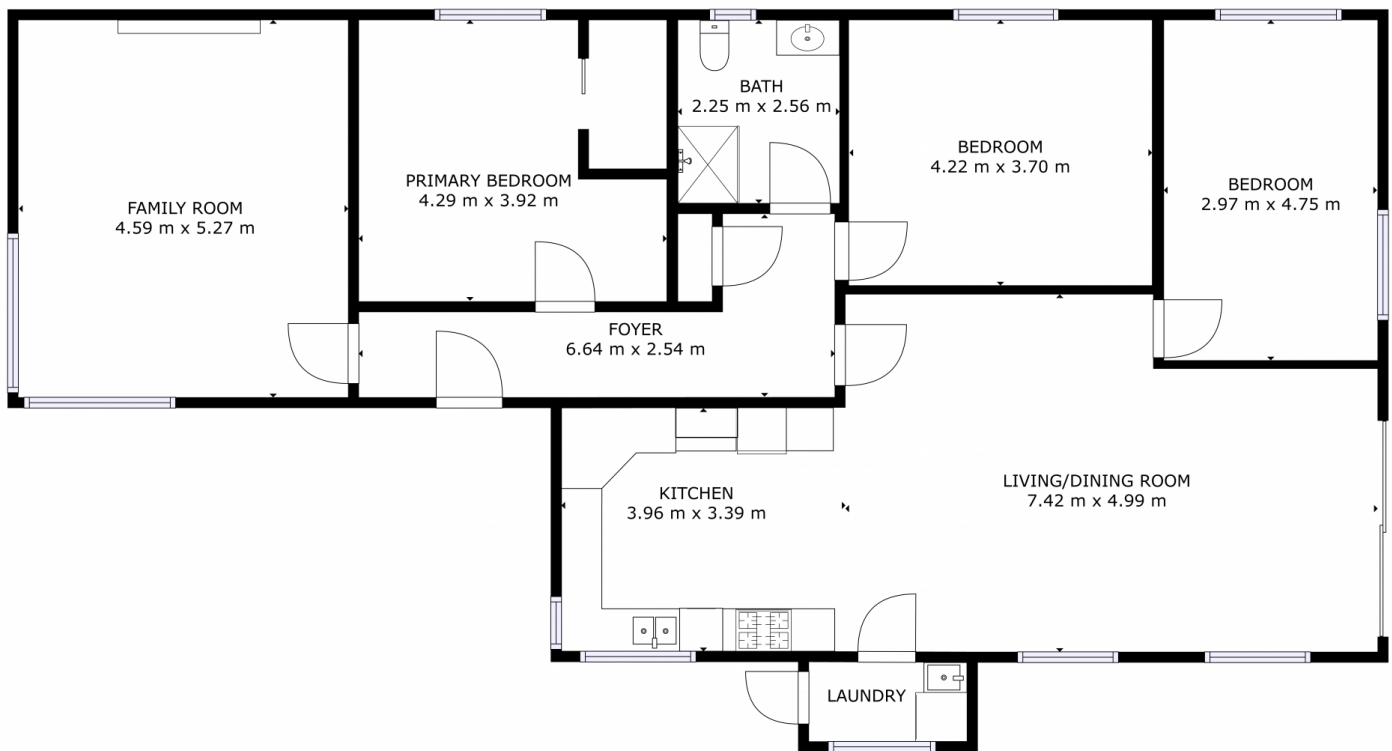
This well-preserved 1950s built home is a masterpiece itself from the outside and it offers even more impressive features inside! Cosy yet well lit, this gem will warmly welcome you with a huge open plan living that flows through the dining and kitchen. This zone feels more spacious and contemporary than it already is with the white wall finishes complemented with wood accents.

One of the highlights of this lovely home is the utilitarian yet minimalist kitchen. It's well-equipped with built-in storage areas and cabinetry. There's also an available pantry area for you to stock some goodies-all smiles because this area

Price : \$ 752,500
Building Size : 148 sqm
Land Size : 947
View : <https://www.4one4.com.au/property/13-elf-avenue-glenorchy-tas/6853433>



Laurie Gray
 0362 737 414



FLOOR 1

GROSS INTERNAL AREA
FLOOR 1: 143 m²
TOTAL: 143 m²

SIZES AND DIMENSIONS ARE APPROXIMATE, ACTUAL MAY VARY.

4ONE4.
PROPERTY CO.