



## 12 Wilga Road Risdon Vale TAS

3 1 3

### Retro Gem

THIS PROPERTY IS NOW BACK ON THE MARKET - BE QUICK

Built in 1963 and proudly perched in an elevated position this 'retro gem' has street appeal that will cause you to be the envy of neighbours and visitors alike!

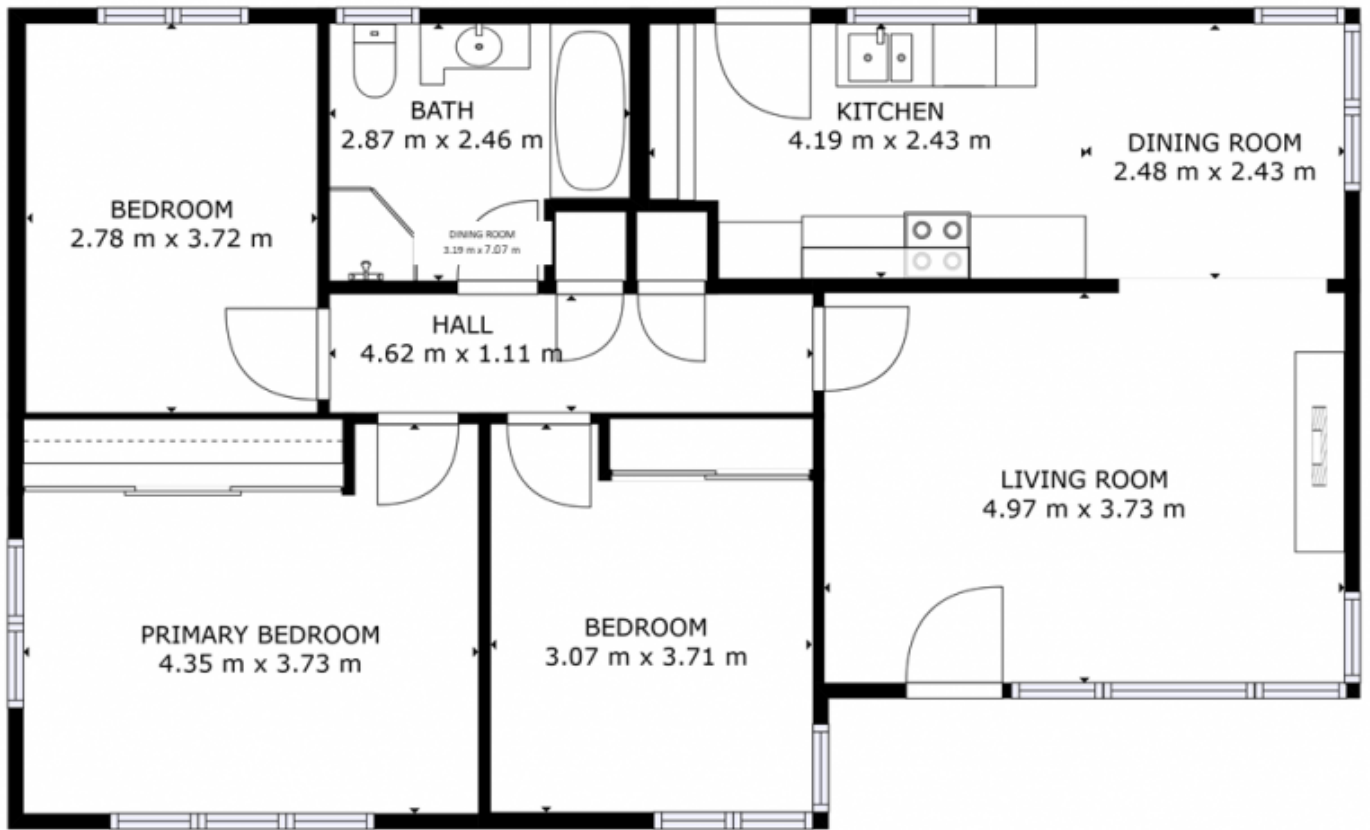
Freshly painted exterior and well maintained front garden welcomes you, a carport for convenient, undercover parking is up first.

On entrance the living room is sun filled and massive windows take in the expansive views. Built in electric heater ensures cosy winter nights are a given.

**Price** : \$ 473,000  
**Building Size** : 89 sqm  
**Land Size** : 700 sqm  
**View** : <https://www.4one4.com.au/property/12-wilga-road-risdon-vale-tas/7223826>



**Laurie Gray**  
 0362 737 414



FLOOR 1

GROSS INTERNAL AREA  
FLOOR 1: 89 m<sup>2</sup>  
TOTAL: 89 m<sup>2</sup>  
SIZES AND DIMENSIONS ARE APPROXIMATE, ACTUAL MAY VARY.

**4ONE4.**  
PROPERTY CO.