



6 Walker Crescent Bridgewater TAS

3 1 4

Choosing the right home will save you from heaps of hassles later. From its family-friendly neighbourhood, convenient location, and well-designed floor plan, this stunning home is a delight to all those who've been meaning to find a place to call home.

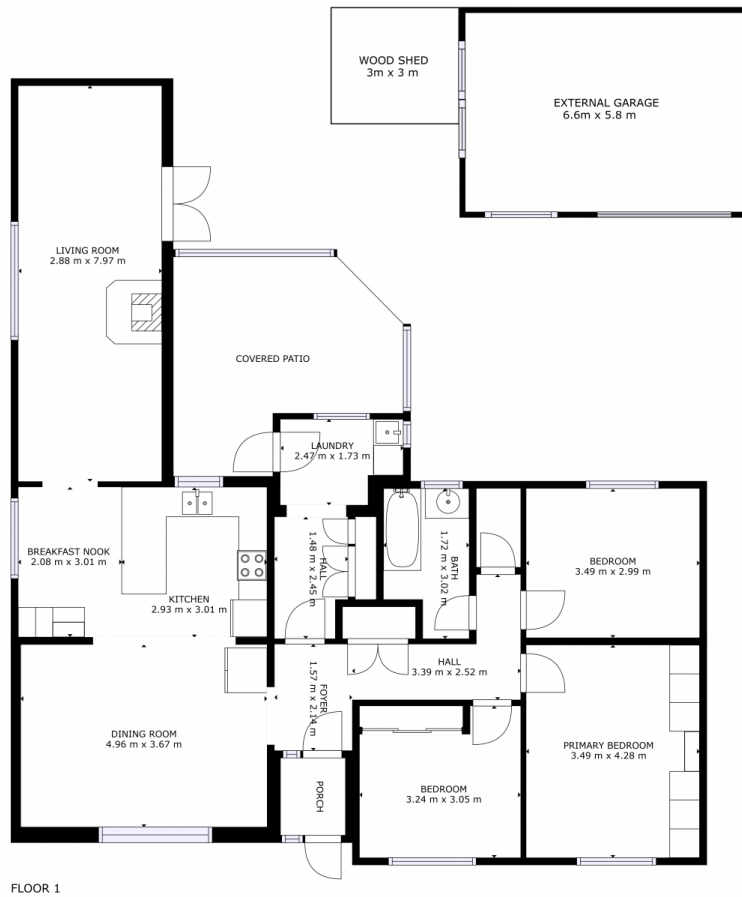
A hint of old-world charm from the outside, inside feels a little dreamy with the light and pastel-coloured walls and floating timber floors throughout. From the open-concept kitchen and living space to a separate and customisable dining or second living area, there are plenty of rooms for your family to enjoy. The entire area is climate-controlled by reverse cycle heating, so rain, hail, or shine, you can feel comfy and cosy.

Down the hall are the three lovely accommodations-all in average sizes, with built-ins. Just across these rooms is the

Price : \$ 400,000
Building Size : 132 sqm
Land Size : 790 sqm
View : <https://www.4one4.com.au/property/6-walker-crescent-bridgewater-tas/7230141>



Paul Berry
 0362 737 414



FLOOR 1

GROSS INTERNAL AREA
 FLOOR 1: 122 m², EXCLUDED AREAS:
 PATIO: 16 m², PORCH: 2 m²
 TOTAL: 122 m²
 SIZES AND DIMENSIONS ARE APPROXIMATE, ACTUAL MAY VARY.