



21 Moondah Drive Berriedale TAS

3  1 

Entry-level homes are hard to come by, and when opportunities come up, it's a matter of acting fast or missing the opportunity. Today is that opportunity with 21 Moondah Drive going to market; this home needs a little TLC, but with an open mind and some tv show inspiration, you could transform this property into something special.

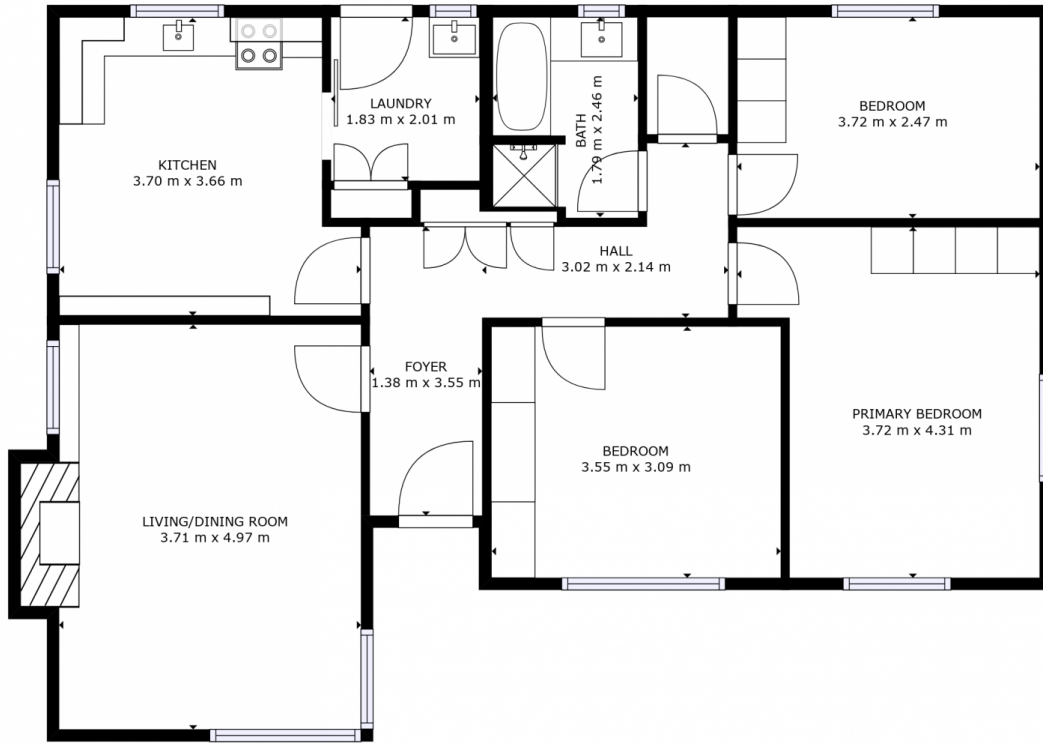
Inside the property, you will find a formal lounge and spacious dine-in kitchen that could be reimagined to a modern open plan living area by removing the wall separating the two. Down the hall are three good size bedrooms and a three-piece bathroom rounding out the property.

Finally, outside, you will find a secure level backyard, carport and large shed/man cave, completing this simple but well thorough out property. So call today and come

Price : \$ 421,000
Building Size : 129 sqm
Land Size : 635 sqm
View : <https://www.4one4.com.au/property/21-moondah-drive-berriedale-tas/7267080>



Patrick Berry
0362 737 414



FLOOR 1

GROSS INTERNAL AREA
FLOOR 1: 90 m²
TOTAL: 90 m²
SIZES AND DIMENSIONS ARE APPROXIMATE, ACTUAL MAY VARY.

4ONE4.
PROPERTY CO.