



324 Rifle Range Road Sandford TAS

2 1 6

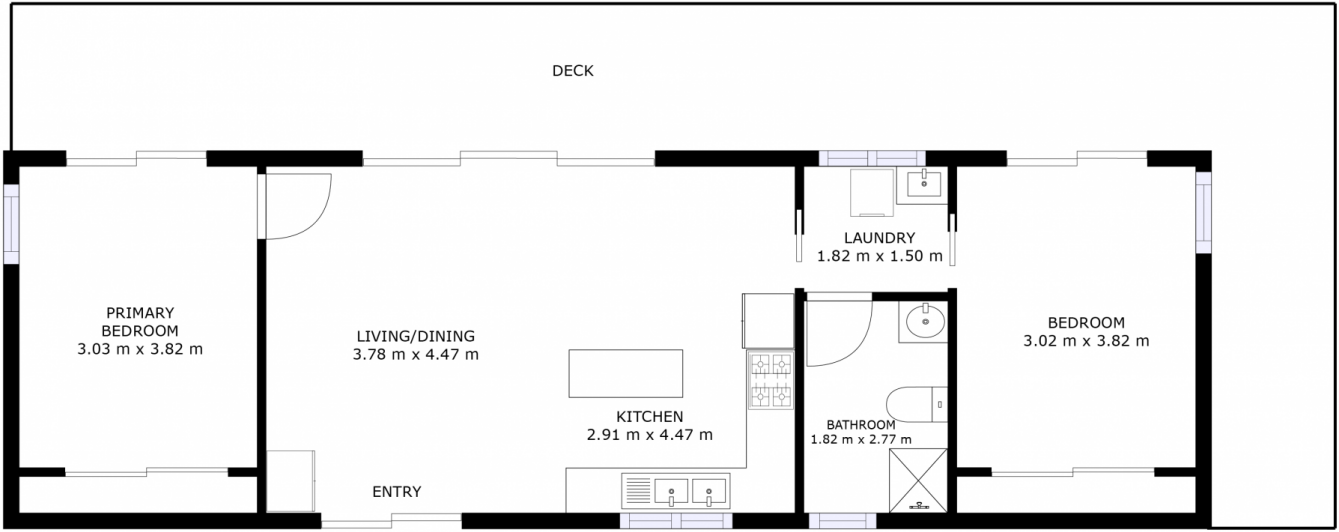
324 RIFLE RANGE ROAD IN SANDFORD.

I honestly love a lifestyle property Tasmanians and it does not get better than 5 acres of prime pasture in Sandford. This is my old stomping ground, so I know what I am talking about & I love it here! You are close to the pristine waters of Mortimer Bay which are perfect for the younger kids playing, paddle boarding or kayaking on the sheltered side of the neck or for the more adventurous, head out to the exceptional surf breaks at Clifton & Goats beach. Moving close to Cremorne you have endless kayaking and fishing and there is even one of the most popular windsurfing spots in Tasmania at Lauderdale! Throw in the areas passion for food and you will find a multitude of excellent restaurants, eateries, coffee shops and artisanal grocers like TCM & Hill Street Grocer. It's starting to sound like I need to move back here!

Price : \$ 770,000
Building Size : 69 sqm
Land Size : 5.12 Acres
View : <https://www.4one4.com.au/property/324-rifle-range-road-sandford-tas/7284622>



Patrick Berry
0362 737 414



FLOOR PLAN

GROSS INTERNAL AREA
FLOOR PLAN: 66 m²
SIZES AND DIMENSIONS ARE APPROXIMATE, ACTUAL MAY VARY.

4ONE4.
PROPERTY CO.