



12 Navigators Rise Granton TAS

4 3 2

As they often say, home is where the heart is. But wouldn't it be equally amusing to play with it and say 'the heart is where the home is'? Well, it still makes perfect sense with this lovely home situated in the heart of Granton.

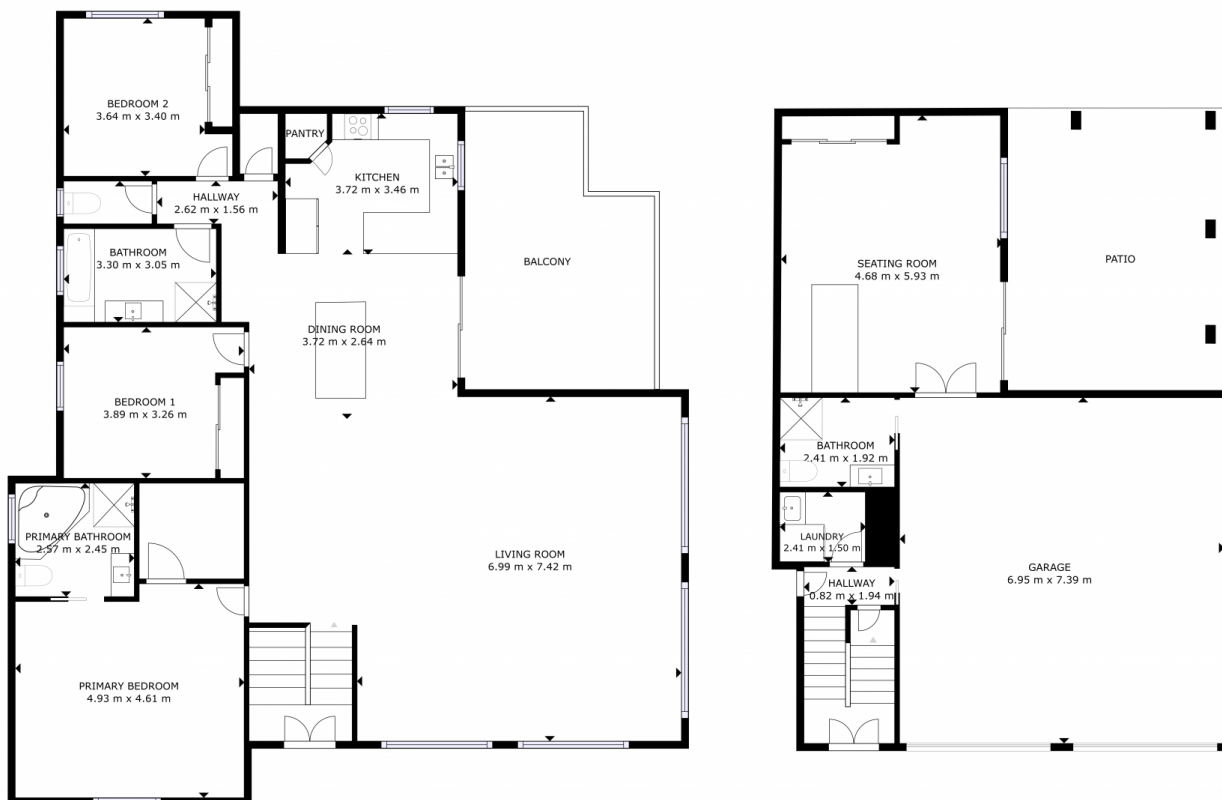
With all things accessible near the area, it makes you wonder if this home is what dreams are really made of. And by the way, we're just talking about the location at the moment, what more if we dwell and begin to explore the wonders it possesses?

This two-storey home enjoys the ultimate yet low-maintenance lifestyle. Built in 2009, you'll notice how it was well-conceptualised and well-maintained throughout the years. If you're fond of wide spaces, this beauty will spoil you with it. Starting from its spacious living area, the first impression is brightly positive with the sun welcoming

Price : \$ 855,000
Building Size : 284 sqm
Land Size : 598 sqm
View : <https://www.4one4.com.au/property/12-navigators-rise-granton-tas/7319754>



Laurie Gray
0362 737 414



GROSS INTERNAL AREA
GROUND FLOOR: 43.93 m², MAIN FLOOR: 169.82 m²
TOTAL: 213.75 m²
SIZES AND DIMENSIONS ARE APPROXIMATE, ACTUAL MAY VARY.

4ONE4.
PROPERTY CO.