



6/27 Reynolds Road Midway Point TAS

2 1 2

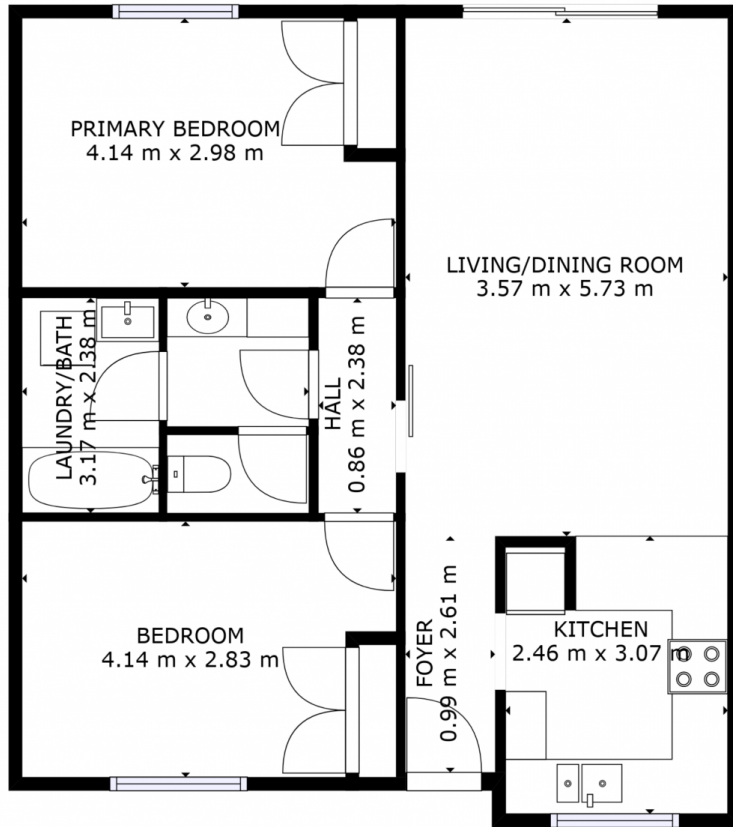
Midway Point is an enviable suburb for retirees, investors or families - quiet and serene, yet surrounded by calm waters for anyone to enjoy! It is close to the Hobart Airport and is the gateway to Sorell, the Tasman Peninsula and the stunning East Coast of Tasmania. This home is only a short distance to the Midway Tavern, local shops and the Pittwater Golf Club. Public transport or the bike track provide a prompt journey right into Sorell and of course you are merely a moments' drive away from the historic township of Richmond and all the vineyards that the beautiful Coal Valley has to offer!

This 2-bedroom home is well worth having an extended look at and make it your own. Situated on a flat parcel of land in a safe complex with easy parking for two cars off-street. The interior boasts a brick feature wall, high vaulted ceilings and these large wooden beams to great

Price : \$ 380,000
Building Size : 75 sqm
Land Size : 192 sqm
View : <https://www.4one4.com.au/property/627-reynolds-road-midway-point-tas/7381478>



Patrick Berry
0362 737 414



GROSS INTERNAL AREA
 FLOOR 1: 67 m²
 TOTAL: 67 m²

SIZES AND DIMENSIONS ARE APPROXIMATE, ACTUAL MAY VARY.

FLOOR 1

4ONE4.
 PROPERTY CO.