



32 Ashbourne Grove West Moonah TAS

3  1  2 

Welcome to 32 Ashbourne Grove, West Moonah - where quiet living meets a convenient location!

This three-bedroom, property is the perfect home for those seeking to be close to the city, while enjoying the tranquillity of a quiet, family-friendly street.

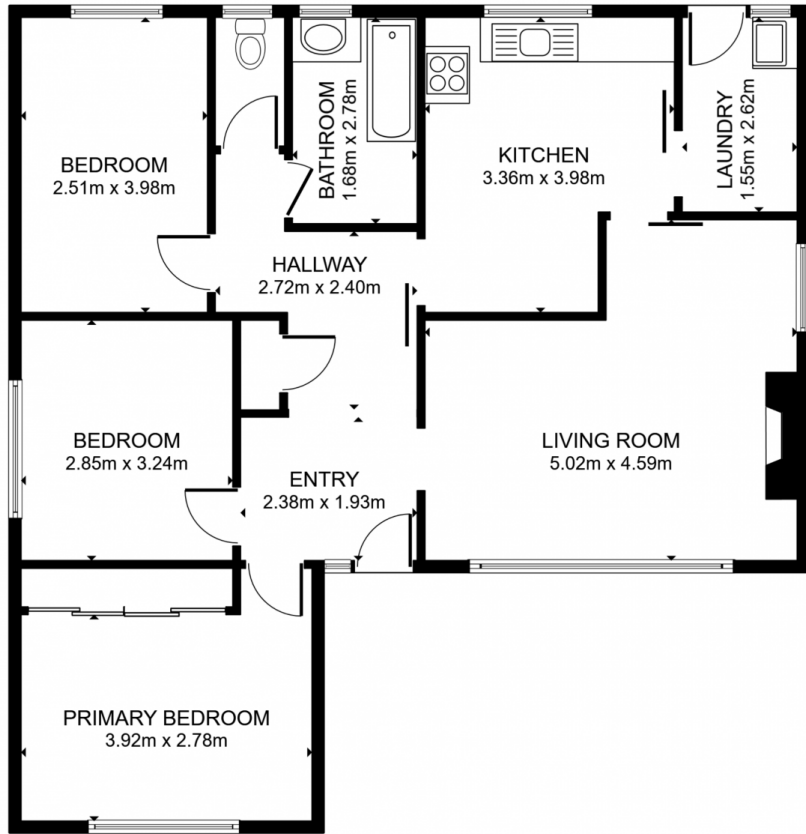
The home is immaculately presented inside with a fresh coat of paint through out offering a light and bright feeling throughout. Upon entering the property you are greeted with a generous entrance along with a spacious lounge room that enjoys ample sun form its northly aspect.

The kitchen and dining area is ideal for entertaining, with a large outdoor patio area and a large secure backyard offering plenty of room for outdoor activities.

Price : \$ 520,000
Building Size : 104 sqm
Land Size : 503 sqm
View : <https://www.4one4.com.au/property/32-ashbourne-grove-west-moonah-tas/7530244>



Patrick Berry
0362 737 414



FLOOR PLAN

GROSS INTERNAL AREA
FLOOR PLAN 90.2 m²
TOTAL: 90.2 m²

SIZES AND DIMENSIONS ARE APPROXIMATE, ACTUAL MAY VARY.

4ONE4.
PROPERTY CO.