



### 3 Milburn Place GLENORCHY TAS

4  1  2 

3 Milburn Place, Glenorchy is an absolute classic for your first move. You have an elevated, corner location meaning greater use of your property and views over the neighbourhood, brick veneer construction for easy low maintenance and a fourth bedroom for when you need just a little bit extra space for living.

**Price** : \$ 530,000  
**Building Size** : 106 sqm  
**Land Size** : 642 sqm  
**View** : <https://www.4one4.com.au/property/3-milburn-place-glenorchy-tas/7538556>

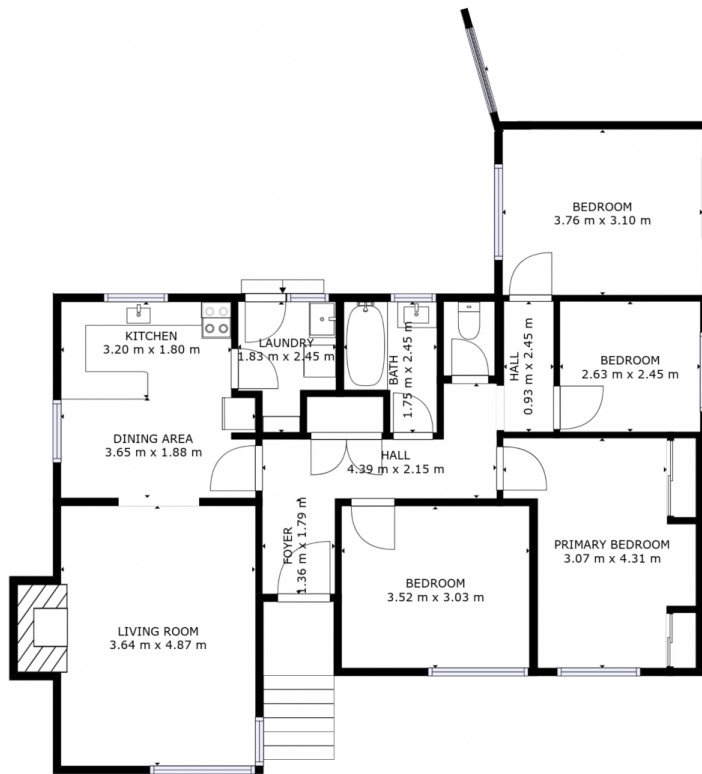
- ? 4-bedroom, brick veneer home on 642m2 of land
- ? Open kitchen, dining & separate lounge
- ? Wood & Reverse cycle heating and cooling to cater for all seasons
- ? Off street parking & courtyard behind roller door creating additional privacy
- ? Elevated position with views across the neighbourhood
- ? All the convenience that Glenorchy has to offer with schools, shops & transport



**John McGregor**  
0419 892 104



**Chris McGregor**  
0407 421 177



GROSS INTERNAL AREA  
FLOOR 1: 100 m<sup>2</sup>

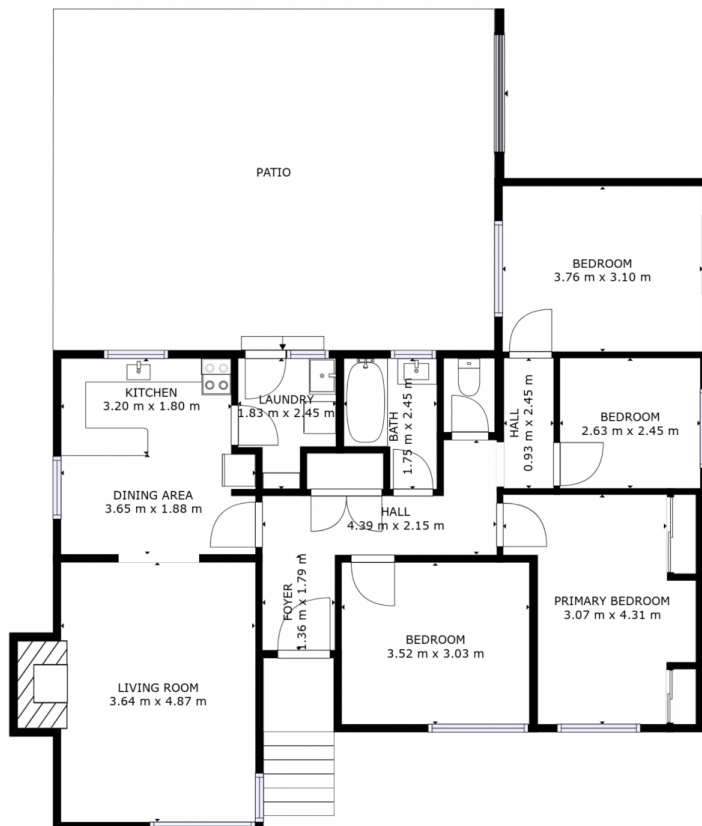
TOTAL: 100 m<sup>2</sup>

SIZES AND DIMENSIONS ARE APPROXIMATE, ACTUAL MAY VARY.



FLOOR 1

**4ONE4.**  
PROPERTY CO.



GROSS INTERNAL AREA  
FLOOR 1: 100 m<sup>2</sup>, EXCLUDED AREAS:  
PATIO: 53 m<sup>2</sup>

TOTAL: 100 m<sup>2</sup>

SIZES AND DIMENSIONS ARE APPROXIMATE, ACTUAL MAY VARY.



FLOOR 1

**4ONE4.**  
PROPERTY CO.