



29 Wassell Place Lindisfarne TAS

4 2 1

BRAND NEW DRIVEWAY JUST CONSTRUCTED!

Are you ready to fall head over heels for your dream home? Look no further, because this stunning timber residence in the peaceful pocket of Lindisfarne is sure to capture your heart. With its clever design features, high ceilings, and skylights, this split-level home is the perfect mix of style and comfort.

Get ready to be dazzled by the gorgeous Tas Oak flooring, classic neutral tones, and carefully placed double glazed windows and doors that create a warm and welcoming atmosphere. Plus, the gas hot water and heating system will keep you toasty on chilly nights, while the ducted vacuum system makes cleaning a breeze!

The practical floorplan is perfect for families, featuring a

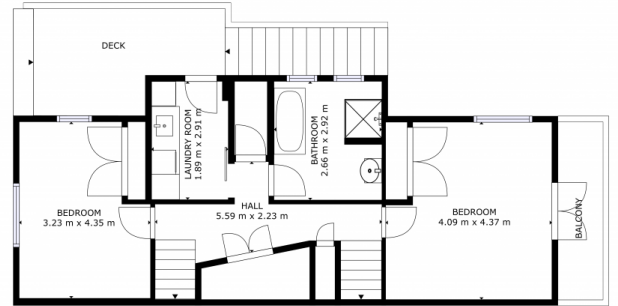
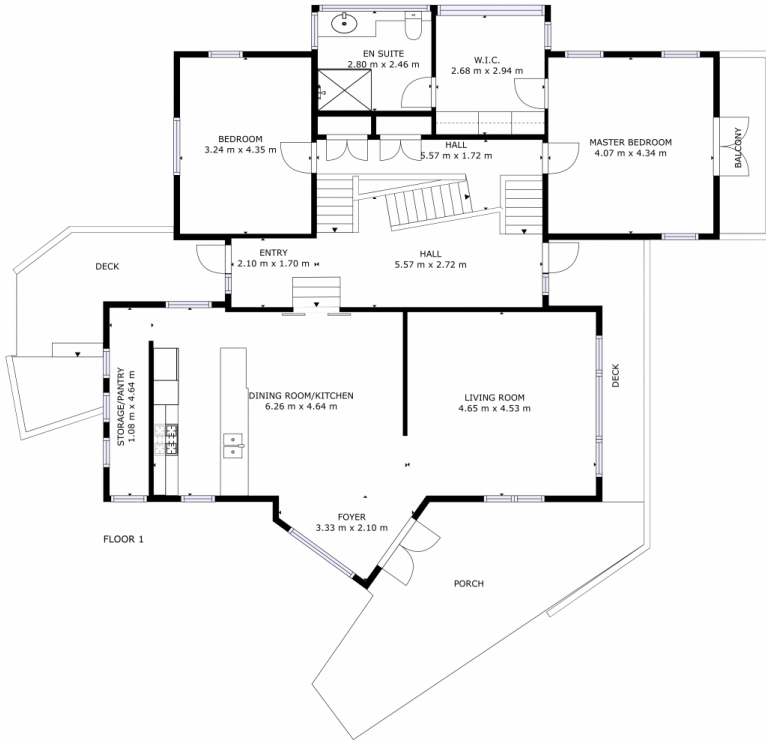
Price : \$ 725,008
Building Size : 199 sqm
Land Size : 1308 sqm
View : <https://www.4one4.com.au/property/29-wassell-place-lindisfarne-tas/7574068>



Aaron Murray
0418969859



John McGregor
0419 892 104



GROSS INTERNAL AREA
 FLOOR 1: 136 m², FLOOR 2: 63 m²
 EXCLUDED AREAS: , BALCONY: 10 m²
 DECK: 33 m², PORCH: 24 m²
 TOTAL: 199 m²

SIZES AND DIMENSIONS ARE APPROXIMATE, ACTUAL MAY VARY.

4ONE4.
 PROPERTY CO.