



## 4/29A Elwick Road Glenorchy TAS

1  1  1 

Located at 4/29a Elwick Road, Glenorchy, this 1-bedroom unit is a hidden gem in the heart of a thriving community. Whether you're an investor looking for a steady rental income or a first-time buyer seeking an affordable and convenient home, this property is sure to exceed your expectations.

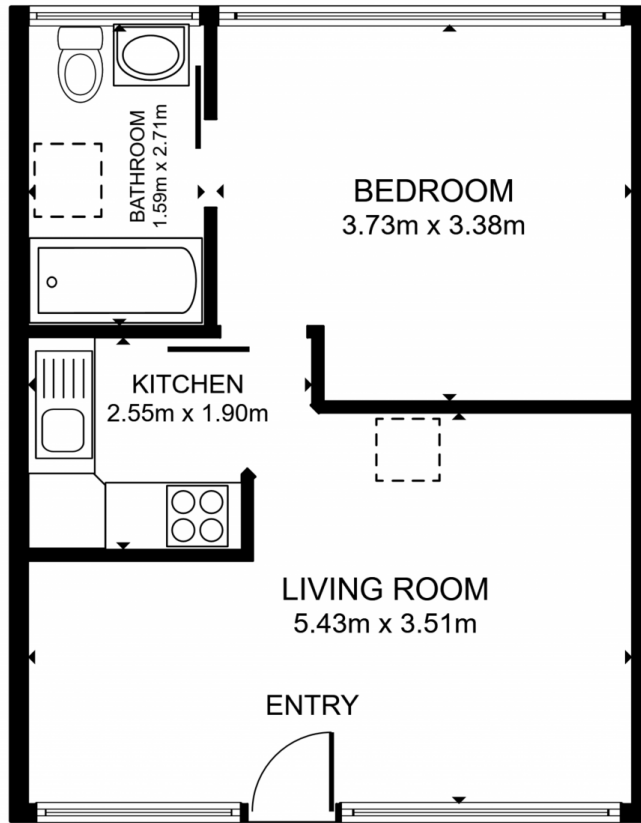
Currently, this unit is a landlord's dream, with reliable tenants in place for six months, paying a generous rental income of \$290 per week.

Inside, you'll find a well-designed layout that maximizes the available space. The open-plan living and dining area create a warm and inviting ambiance, perfect for relaxation or entertaining guests. The kitchen features ample storage, making meal preparation a breeze.

**Price** : O/A \$240,000  
**Building Size** : 40 sqm  
**Land Size** : 40 sqm  
**View** : <https://www.4one4.com.au/property/429-a-elwick-road-glenorchy-tas/7594603>



**Patrick Berry**  
0362 737 414



FLOOR PLAN

GROSS INTERNAL AREA  
FLOOR PLAN 38.0 m<sup>2</sup>  
TOTAL: 38.0 m<sup>2</sup>  
SIZES AND DIMENSIONS ARE APPROXIMATE, ACTUAL MAY VARY.

**4ONE4.**  
PROPERTY CO.