



134 Marys Hope Road ROSETTA TAS

3  1  2 

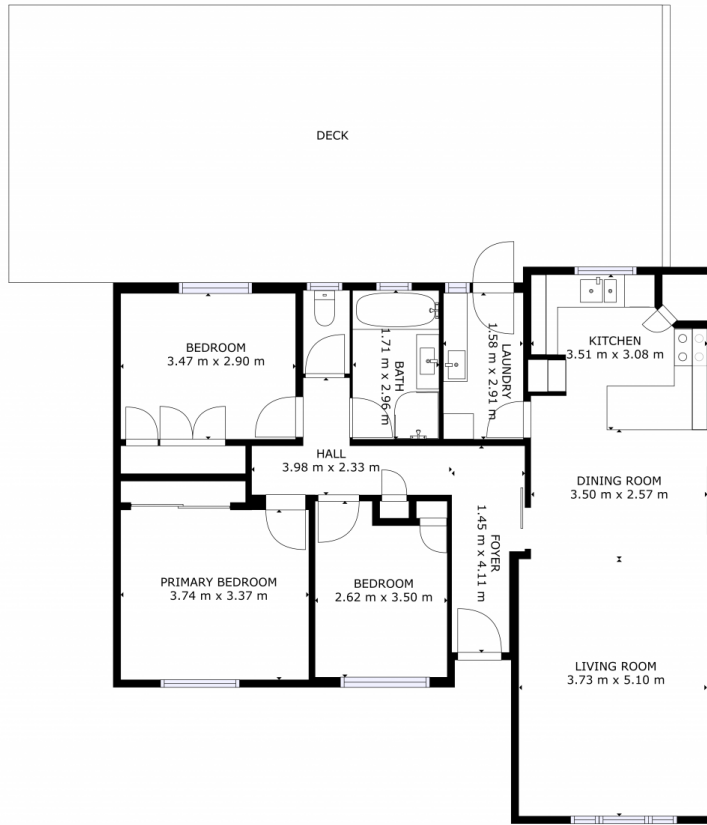
If you've been looking for your first home, if you're downsizing, or maybe looking for an investment property, then look no further! This well presented brick & tile home offers spacious open plan living in a very desirable area nice and close to a variety of local services and attractions, and it's only 15-20 mins drive from Hobart's CBD.

Price : \$ 570,500
Building Size : 113 sqm
Land Size : 763 sqm
View : <https://www.4one4.com.au/property/134-marys-hope-road-rosetta-tas/7674272>

The home offers a level undercover entry, which leads to an entry hall/central hallway, to the right you'll find a spacious open plan living area featuring reverse cycle heating, and solid timber floorboards. The well equipped kitchen/dining area offers plenty of cupboards & bench space and looks over the backyard. To the left of the entry hall are 3 large bedrooms with built-in robes, a very neat & tidy 3 piece bathroom and a separate toilet. The carpets & neutral paint pallet are in good condition throughout.



Martin Evans
0362 737 414



GROSS INTERNAL AREA
 FLOOR 1: 100 m², EXCLUDED AREAS:
 DECK: 71 m²
 TOTAL: 100 m²

SIZES AND DIMENSIONS ARE APPROXIMATE, ACTUAL MAY VARY.

FLOOR 1

4ONE4.
 PROPERTY CO.