



8 Elaia Drive Risdon Vale TAS

3 2 4

Set against a backdrop of majestic landscapes and breathtaking views down into the valley, this home feels like a lifestyle magazine spread, offering pages for your aspirations to come alive.

From the grand entrance that warmly welcomes you with open arms to the neutral and meticulously crafted interior, home customisation is certainly a bliss for every home designer. The modern open plan concept that allows you to freely navigate the living, dining, and kitchen spaces is definitely a convenience worth noting.

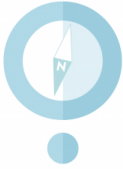
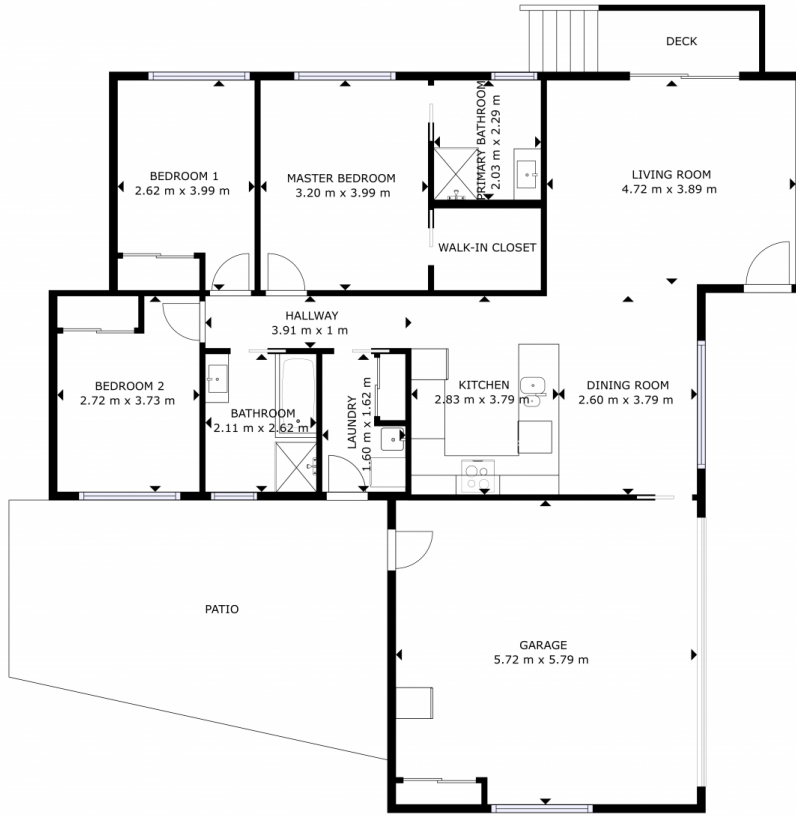
If you're someone who loves to organise kitchen stuff, then the storage spaces and cabinetries available will surely approve to your liking. Plus, preparing meals whilst overlooking an amazing view? A big thumbs up!

Price : \$ 665,000
Building Size : 106 sqm
Land Size : 607 sqm
View : <https://www.4one4.com.au/property/8-elaia-drive-risdon-vale-tas/7686553>



Laurie Gray
0362 737 414

ENTERTAINING
DECK
4.2 m x 4.2 m



GROSS INTERNAL AREA
GROUND FLOOR: 97.66 m²
TOTAL: 97.66 m²
SIZES AND DIMENSIONS ARE APPROXIMATE, ACTUAL MAY VARY.

4ONE4.
PROPERTY CO.