



31 Sandy Bay Road Battery Point TAS

3 1 2

Built in 1915, combining a perfect mix of personality, unparalleled position and unlimited potential, this property is one that will be a place of pride as you create your own legacy that will last another 100 years.

Personality

- ? Beautiful federation era features throughout
- ? High ceilings, picture rails, hardwood floors
- ? Charming façade with historic retaining wall framing the front

Position

- ? On the border of Battery Point, Sandy Bay & Hobart
- ? Access from Hampden Road with plenty of off-street parking
- ? Walking distance to the centre of the city, Salamanca & Sandy Bay

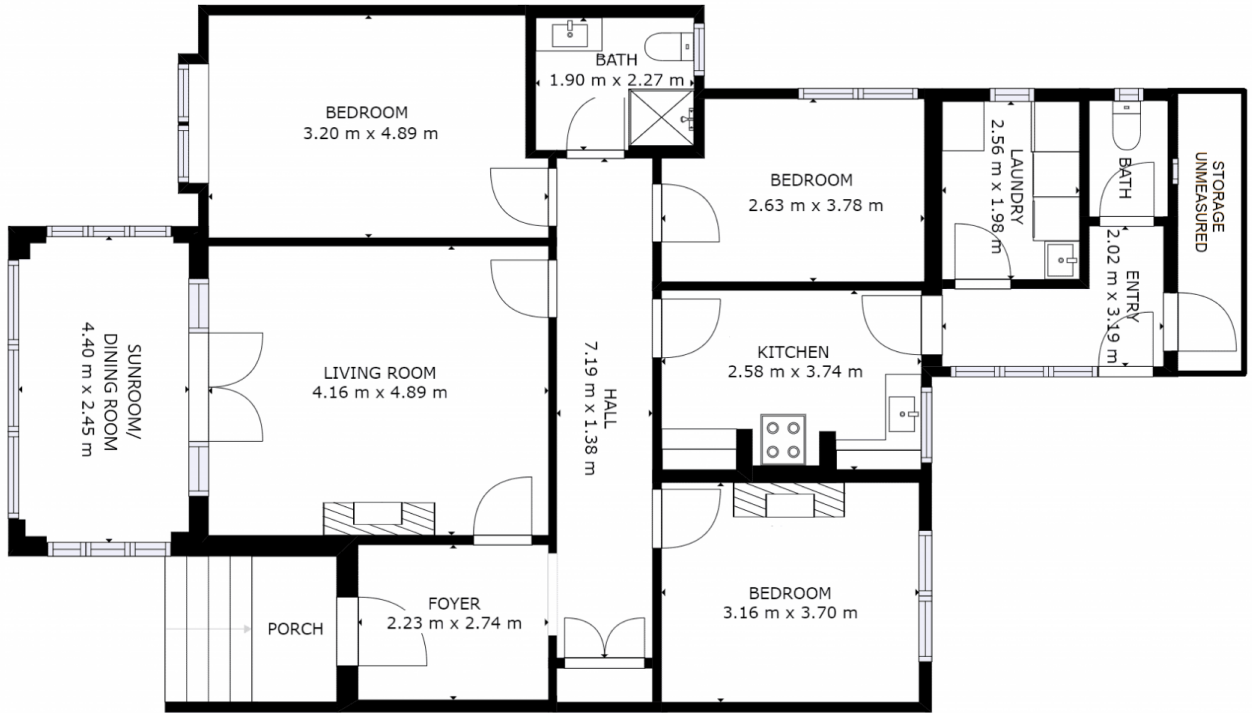
Price : \$ 1,200,000
Building Size : 130 sqm
Land Size : 357 sqm
View : <https://www.4one4.com.au/property/31-sandy-bay-road-battery-point-tas/7689284>



John McGregor
0419 892 104



Chris McGregor
0407 421 177



GROSS INTERNAL AREA
 FLOOR 1: 130 m²
 TOTAL: 130 m²

SIZES AND DIMENSIONS ARE APPROXIMATE, ACTUAL MAY VARY.



4ONE4.
 PROPERTY CO.