



## 102 High Street Oatlands TAS

2 1 10

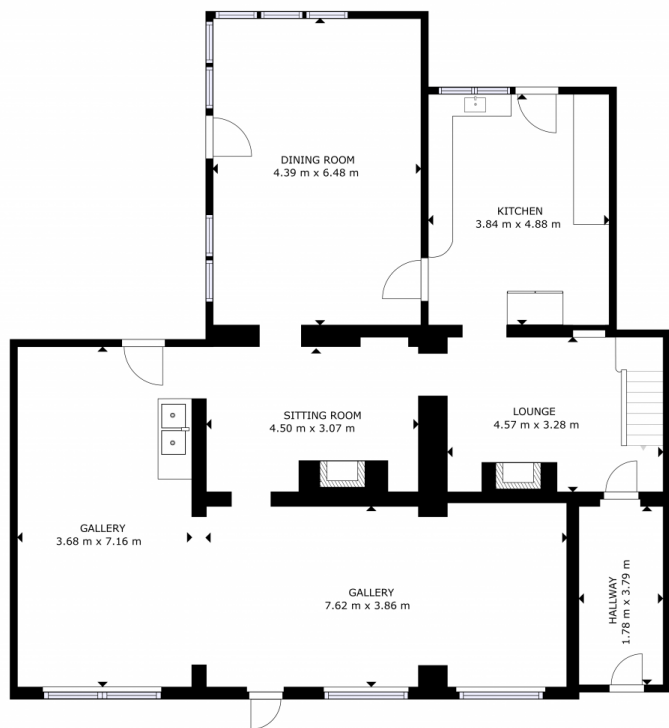
Welcome to 102 High St, this beautiful Georgian building is located in the heart of the ever popular town of Oatlands. With a variety of features including a fantastic multi-use retail/studio space plus a spacious two-bedroom residence upstairs, 40x solar panels with a 10kw inverter, upgraded wiring & plumbing, and a huge garage/workshop at the rear of the property with separate access, and so much more! This property is sure to attract a variety of buyers.

This beautiful historic building is set over two levels and while there have been some recent upgrades, it still retains many of its period features. The street level incorporates a spacious multi-use retail space (currently used as an art studio) which also includes a large kitchen & dining room, 2x separate parlour rooms plus there's plenty of storage space. The residence upstairs offers comfortable living for

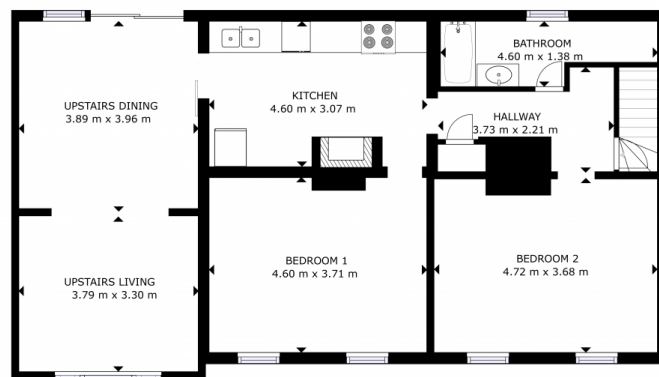
**Price** : \$ 557,000  
**Building Size** : 190 sqm  
**Land Size** : 1294 sqm  
**View** : <https://www.4one4.com.au/property/102-high-street-oatlands-tas/7691866>



**Martin Evans**  
 0362 737 414



GROUND FLOOR



SECOND FLOOR

GROSS INTERNAL AREA  
 GROUND FLOOR: 149.83 m<sup>2</sup>, SECOND FLOOR: 96.23 m<sup>2</sup>  
 TOTAL: 246.06 m<sup>2</sup>  
 SIZES AND DIMENSIONS ARE APPROXIMATE, ACTUAL MAY VARY.

**4ONE4.**  
 PROPERTY CO.