



## 10 Tianna Road LINDISFARNE TAS

4 2 4

Nestled in the heart of Lindisfarne, this stunning residence boasts both space and style. Perfectly tailored for families, its expansive layout offers 4 spacious bedrooms, 2 tidy bathrooms, and not one, but two generous living areas. Every room is thoughtfully designed to provide comfort and functionality, making daily living an absolute pleasure.

**Price** : \$ 727,000  
**Building Size** : 184 sqm  
**Land Size** : 577 sqm  
**View** : <https://www.4one4.com.au/property/10-tianna-road-lindisfarne-tas/7722819>

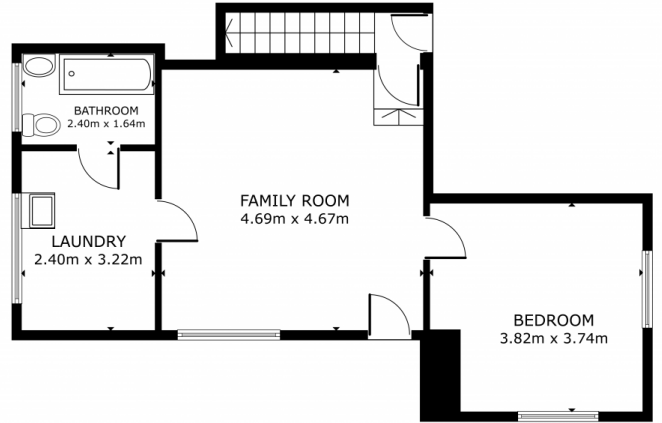
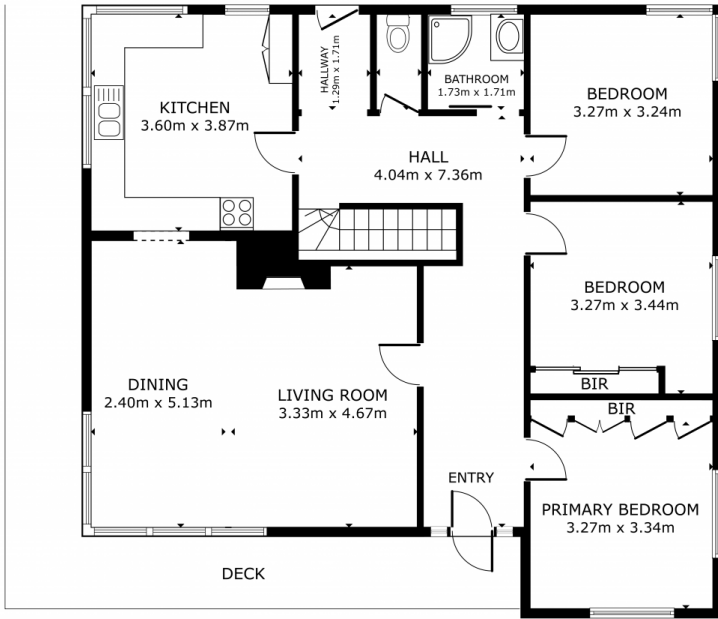
But what truly sets this home apart is its mesmerizing panorama. Picture this: sipping your morning coffee while gazing at the shimmering waters of the River Derwent, the iconic Tasman Bridge in the distance, and the picturesque skyline of Hobart's CBD as its backdrop. These views are not just reserved for the daytime. As dusk settles, watch as the city and bridge illuminate, providing a tranquil yet vibrant evening scene, perfect for alfresco dining or simply unwinding.



**Patrick Berry**  
0362 737 414



**Aaron Murray**  
0418969859



FLOOR 1

FLOOR 2

GROSS INTERNAL AREA  
 FLOOR 1 1106.7 m<sup>2</sup> FLOOR 2 52.5 m<sup>2</sup>  
 TOTAL : 159.2 m<sup>2</sup>  
 SIZES AND DIMENSIONS ARE APPROXIMATE, ACTUAL MAY VARY.