

552 Cockatoo Gully Road Elderslie TAS

3 2 8

The home is designed in two separate areas, making it suitable for dual living arrangements. This can be ideal for extended families, guests, or as a source of rental income and is set on 26 acres of land.

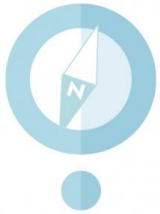
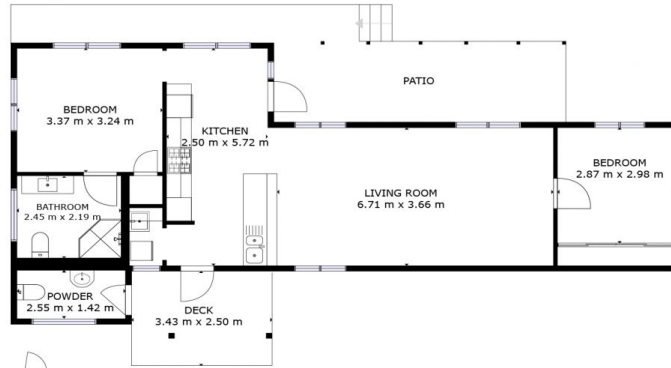
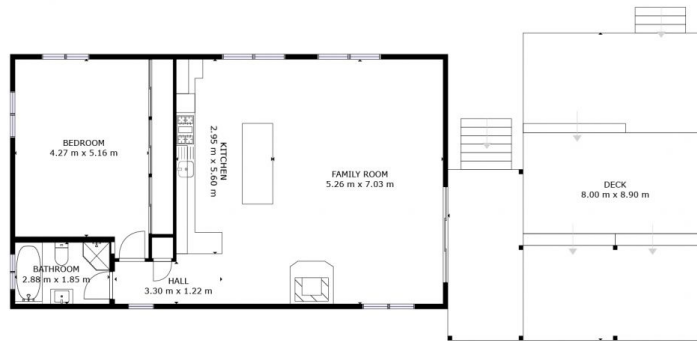
The first area of the home features a modern kitchen with high-end appliances, an open-plan lounge/dining area with a reverse cycle heat pump for climate control. In this area, there are two of the three bedrooms, with the main bedroom having an ensuite bathroom and built-in robes in each bedroom.

The second living area is an impressive open-plan space with a modern kitchen. It includes a third large bedroom with a full wall of built-in robes and a stylish bathroom with a spa.

Price : \$ 560,000
Building Size : 150 sqm
Land Size : 26.44 Acres
View : <https://www.4one4.com.au/property/552-cockatoo-gully-road-elderslie-tas/7801529>



Shaun McGuire
0362 737 414



GROSS INTERNAL AREA
EXCLUDED AREAS: DECK: 71 m²
TOTAL: 166 m²
SIZES AND DIMENSIONS ARE APPROXIMATE, ACTUAL MAY VARY.

4ONE4.
PROPERTY CO.