



34 Lampton Avenue Derwent Park TAS

3 1 1

Located in the bustling location of Derwent Park, a welcoming house proudly stands on a generous 688sqm estate, offering an enticing opportunity for first-home buyers and investors alike to unlock its potential and create their own story within this inviting home.

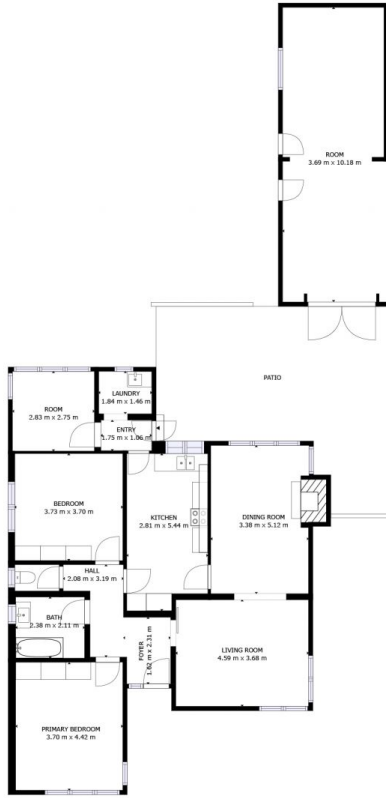
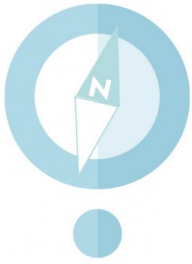
Illuminated by abundant natural light, this 102 sqm home features a cosy heat pump for year-round comfort. The seamless transition from the living room to the kitchen creates a free-flowing layout that is perfect for entertaining and family gatherings. Located close to essential services, this energy-efficient residence offers its residents a comfortable and inviting living experience.

This home boasts three bedrooms, a well-appointed bathroom, and built-in wardrobes that provide ample storage space, making living a pleasure.

Price : \$ 490,000
Building Size : 102 sqm
Land Size : 688 sqm
View : <https://www.4one4.com.au/property/34-lampton-avenue-derwent-park-tas/7853093>



Patrick Berry
0362 737 414



FLOOR 1

GROSS INTERNAL AREA
FLOOR 1: 150 m², EXCLUDED AREAS:
PATIO: 43 m²
TOTAL: 150 m²

SIZES AND DIMENSIONS ARE APPROXIMATE, ACTUAL MAY VARY.

4ONE4.
PROPERTY CO.