



64 Gordons Hill Road Lindisfarne TAS

3 1 3

Located in the popular suburb of Lindisfarne and only 10 minutes drive to Hobart CBD, this classic 1950's home provides endless potential for a range of buyers looking to snap up their next property in a fantastic area.

Set on 683sqm of gently sloping land, the property has plenty of street frontage allowing for both off street parking and a single garage. The concrete driveway extends also to the rear yard where there is ample space for family activities and space to enjoy the low maintenance garden.

Moving inside you are invited to enjoy a functional layout which consists of an open flowing kitchen and lounge area, three generous bedrooms, a central bathroom and separate toilet. An additional sunroom provides an excellent place for additional living or as a 'muck room' as it offers direct access to both the back yard or and laundry.

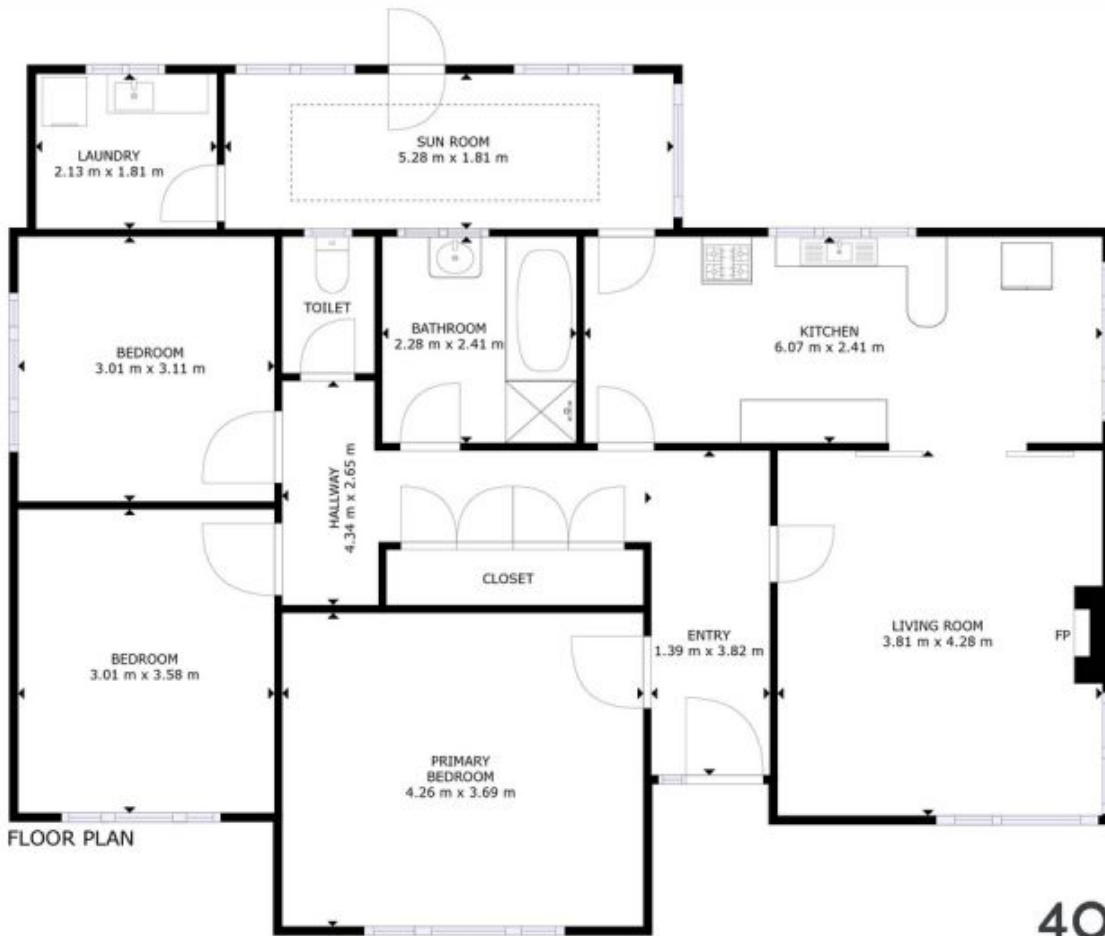
Price : \$ 580,000
Building Size : 101 sqm
Land Size : 683 sqm
View : <https://www.4one4.com.au/property/64-gordons-hill-road-lindisfarne-tas/7892898>



Aaron Murray
0418969859



John McGregor
0419 892 104



FLOOR PLAN

GROSS INTERNAL AREA
 FLOOR PLAN: 106 m²
 SIZES AND DIMENSIONS ARE APPROXIMATE, ACTUAL MAY VARY.



4ONE4.
 PROPERTY CO.