



80 Chippendale Street CLAREMONT TAS

3 1 3

What a fantastic opportunity to get into the market. Whether you're looking for your first home or an investment property, this terrific family home offers sunny spacious living, a great little sunroom perfect for BBQ's, and it looks over a large secure garden, undercover parking, and it's ideally located at the end of a quiet cul-de-sac.

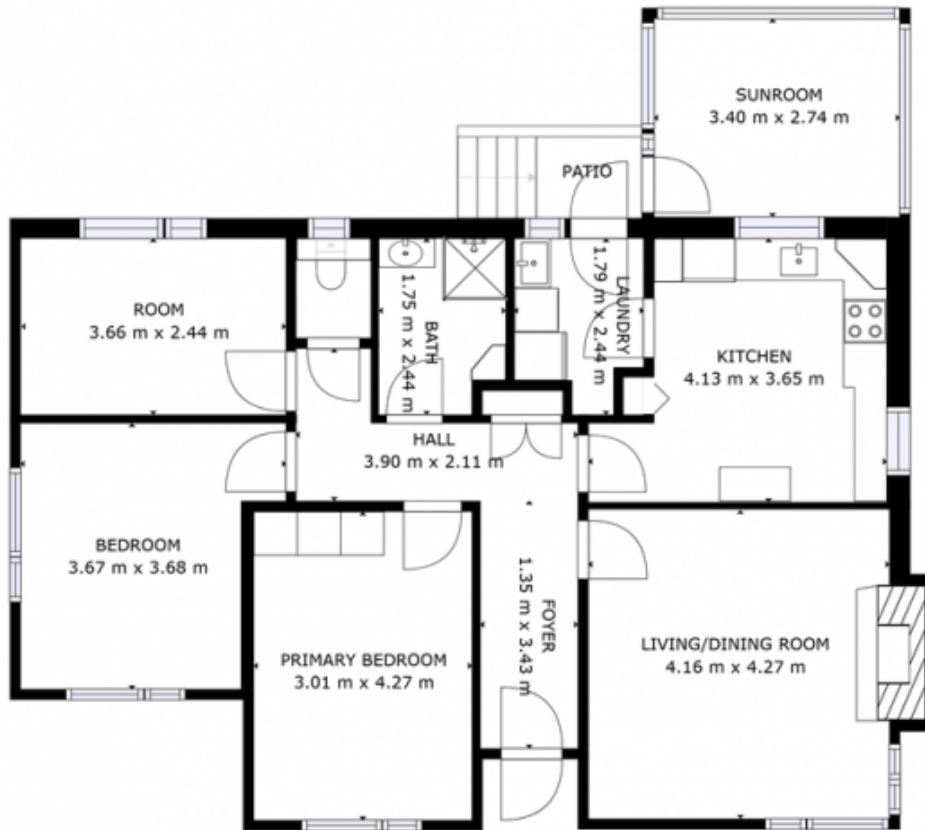
Upon entry you're greeted by an entry hall and central hallway, to the right is a bright & sunny living room featuring reverse cycle heating, and a lovely timber kitchen with plenty of cupboard and bench space, and is located adjacent to the sunroom overlooking the backyard and beyond. To the left are 3 good size bedrooms plus a neat & tidy bathroom & separate toilet.

Other terrific features include a very handy little workshop space underneath, accessed from the carport, perfect for

Price : Offers Over \$495,000
Building Size : 100 sqm
Land Size : 683 sqm
View : <https://www.4one4.com.au/property/80-chippendale-street-claremont-tas/7928356>



Martin Evans
0362 737 414



GROSS INTERNAL AREA
 FLOOR 1: 100 m², EXCLUDED AREAS:
 PATIO: 2 m²
 TOTAL: 100 m²

SIZES AND DIMENSIONS ARE APPROXIMATE, ACTUAL MAY VARY.

FLOOR 1

4ONE4.
 PROPERTY CO.