



1 Surada Place Glenorchy TAS

4  1  2 

Nestled in the heart of the Glenorchy, 1 Surada Place offers a unique blend of comfort, style, and convenience, making it the perfect sanctuary for first-home buyers, growing families, professionals, and anyone in between. This 4-bedroom dwelling not only promises a home but a lifestyle enhanced by modern living and the warmth of a welcoming neighbourhood.

As you step inside, the blend of elegance and practicality is immediately apparent. Originally built in 1981, this home has had a thoughtful and tasteful renovation creating the perfect space for modern living. The open-plan living area, adorned with natural light, sets the stage for memorable moments with loved ones and leads through to the meticulously designed kitchen, reflecting a commitment to quality and comfort.

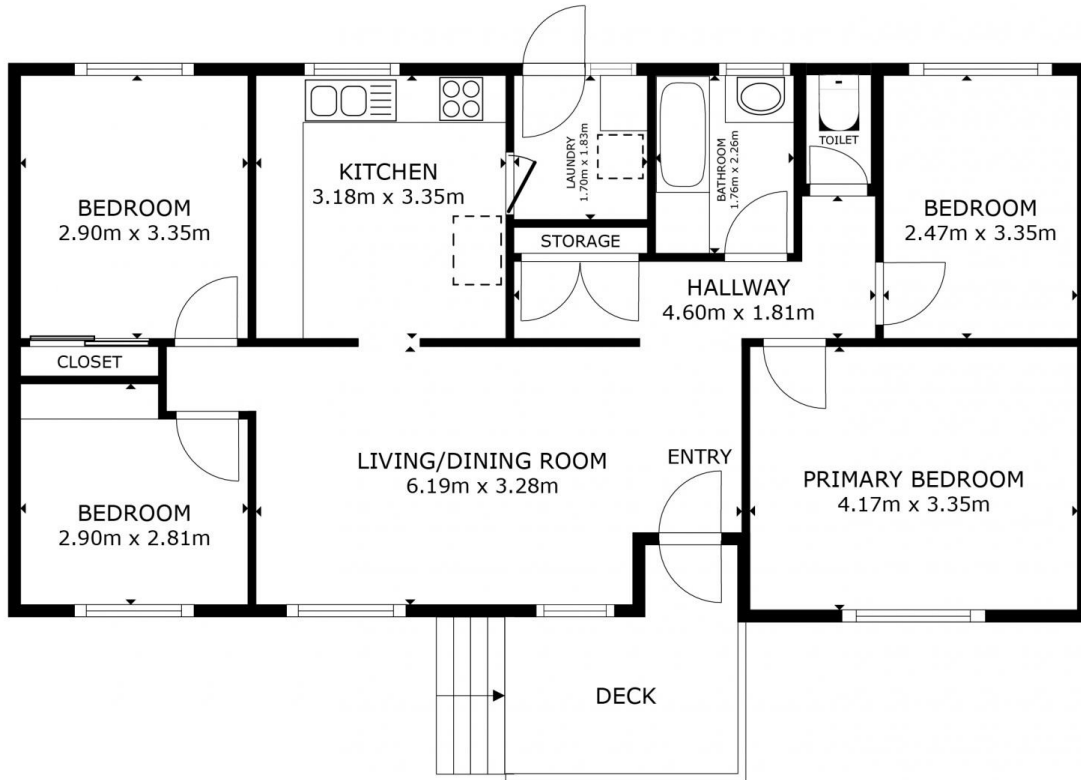
Price : \$ 535,000
Building Size : 102 sqm
Land Size : 620 sqm
View : <https://www.4one4.com.au/property/1-surada-place-glenorchy-tas/7954596>



Laurie Gray
0362 737 414



Aaron Murray
0418969859



FLOOR PLAN

GROSS INTERNAL AREA
 FLOOR PLAN 87.8 m²
 EXCLUDED AREAS : DECK 6.8 m²
 TOTAL : 87.8 m²
SIZES AND DIMENSIONS ARE APPROXIMATE, ACTUAL MAY VARY.

