

## 673 Grasstree Hill Road Grasstree Hill TAS

3  1  6 

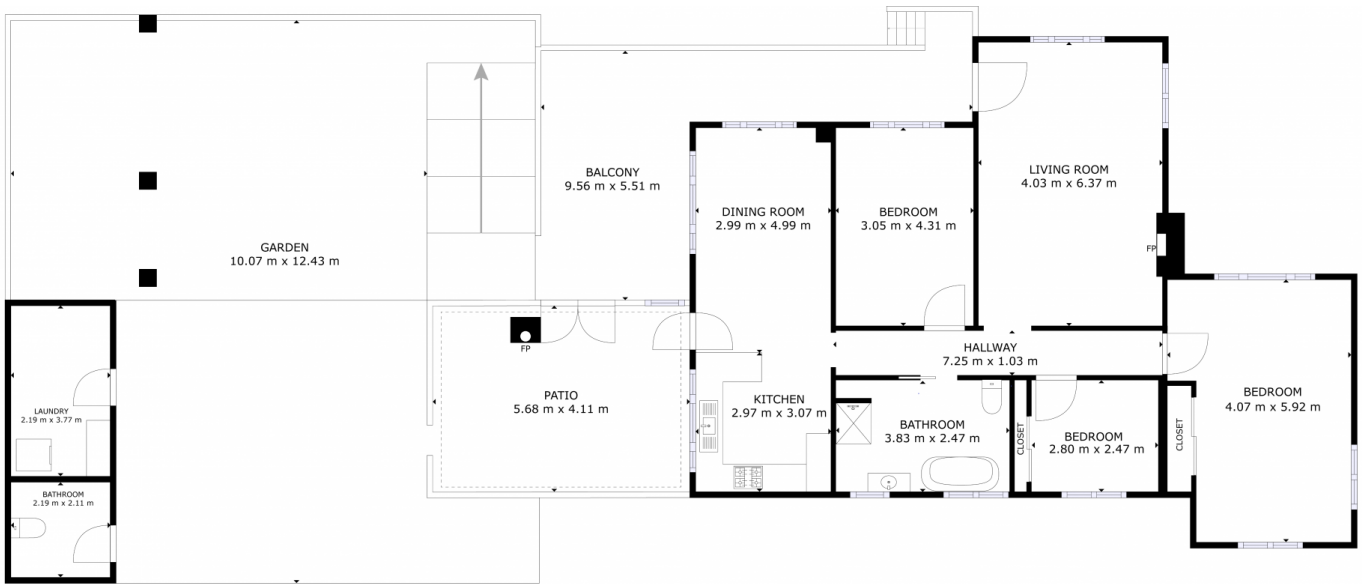
Welcome to 673 Grasstree Hill Rd, an idyllic retreat nestled on 3.5 hectares of land. This charming property seamlessly blends a country lifestyle just minutes away from schools, major shopping centres and many other local attractions. Key words to describe this property are "massive potential?" with multiple living areas, solid timber floors, reverse cycle & wood heating, outdoor entertaining, a garage/workshop, and much more. I'd say we've ticked a few boxes already!

Upon entry, you're greeted with a sunny well equipped open plan kitchen/dining/living area, the central hall leads to another separate living area ensuring there's plenty of space for the whole family, 3x good size bedrooms and a spacious updated bathroom. The home features 2x reverse cycle heating/cooling systems plus a wood heater, keeping you and your family cosy and warm in winter and nice and cool in summer.

**Price** : Offers Over \$565,000  
**Building Size** : 100 sqm  
**Land Size** : 3.53 ha  
**View** : <https://www.4one4.com.au/property/673-grasstree-hill-road-grasstree-hill-tas/8002246>



**Martin Evans**  
0362 737 414



FLOOR PLAN



GROSS INTERNAL AREA  
 FLOOR PLAN: 128 m<sup>2</sup>  
 EXCLUDED AREAS: BALCONY: 28 m<sup>2</sup>  
 PATIO: 23 m<sup>2</sup>, GARDEN: 119 m<sup>2</sup>  
 SIZES AND DIMENSIONS ARE APPROXIMATE, ACTUAL MAY VARY.

**4ONE4.**  
 PROPERTY CO.