



4/2 Mansell Court SANDY BAY TAS

2  1  1 

4/2 Mansell Court, Sandy Bay is located in one of the most prestigious areas in all of Greater Hobart.

Overlooking the pet friendly Nutgrove Beach, and with direct walking access through the public reserve, within seconds you can feel sand between your toes and experience the sunrise & sunset set every day of the year.

Then, only a short walk away, you'll be in the heart of Long Beach reserve filled with eateries, cafes, IGA supermarket, public BBQ areas and so much more.

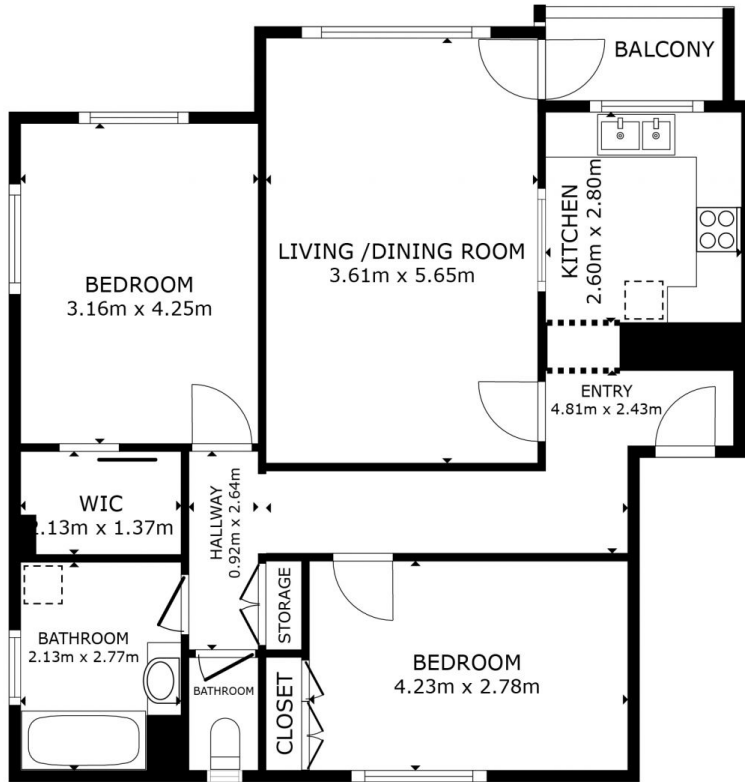
With all the area has to offer, it is no surprise why so few properties sell as those who experience this lifestyle tend to hold onto their properties for a long time.

[For full version visit the website](https://www.4one4.com.au/property/42-mansell-court-sandy-bay-tas/8104325)

Type : Apartment
Price : Offers Around \$690,000
Building Size : 70 sqm
Land Size : 92 sqm
View : <https://www.4one4.com.au/property/42-mansell-court-sandy-bay-tas/8104325>



John McGregor
0419 892 104



FLOOR PLAN

GROSS INTERNAL AREA
 FLOOR PLAN 80.1 m²
 EXCLUDED AREAS - BALCONY 2.6 m²
 TOTAL : 80.1 m²
 SIZES AND DIMENSIONS ARE APPROXIMATE, ACTUAL MAY VARY.

4ONE4.
 PROPERTY CO.