

102 Kennedy Drive Cambridge TAS

3 1 12

This well-maintained 3-bedroom home sits on a generous 1,196m² commercial-zoned block in the rapidly growing Cambridge business hub. While the property has long been used as a residence, it presents an excellent opportunity for various uses, whether as a comfortable family home or a potential office conversion.

The 125m² home features level entry into a wide central hallway, high ceilings, three well-sized bedrooms, a spacious living area, a separate dining room, and a large kitchen. The home is clean & tidy and has had a fresh coat of paint, making it move-in ready for residential or commercial adaptation.

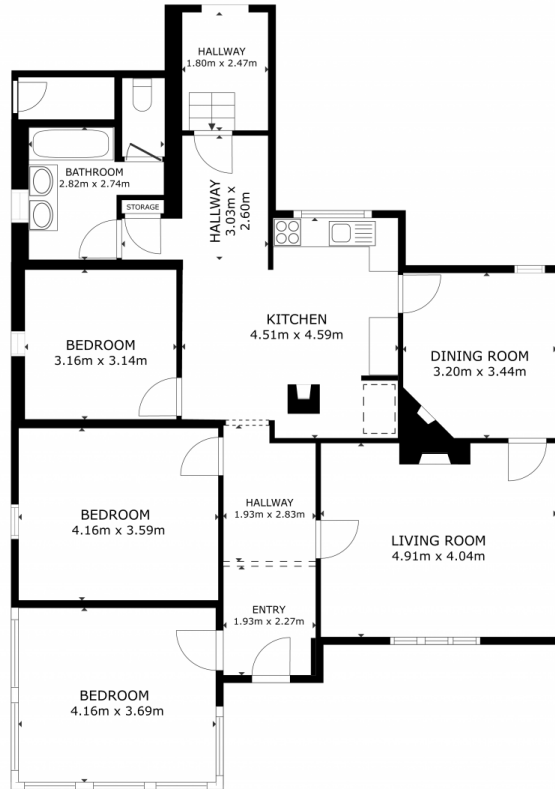
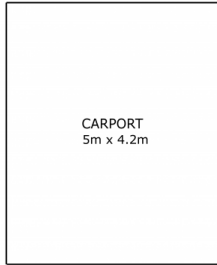
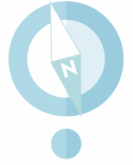
Outside, the expansive level block offers ample space for

[For full version visit the website](https://www.4one4.com.au/property/102-kennedy-drive-cambridge-tas/8257725)

Type : House
Building Size : 125 sqm
Land Size : 1196 sqm
View : <https://www.4one4.com.au/property/102-kennedy-drive-cambridge-tas/8257725>



Martin Evans
0362 737 414



CAMBRIDGE. 102 Kennedy Drive

GROSS INTERNAL AREA
FLOOR PLAN 122.4 m²
CARPORT: 21 m²
TOTAL : 143.4 m²

SIZES AND DIMENSIONS ARE APPROXIMATE, ACTUAL MAY VARY.

4ONE4. PROPERTY CO.