



### 64 Abbotsfield Road Claremont TAS

3 1 4

Step back in time with Abbyfield Cottage ? a charming period gem brimming with character and waiting for a new owner to add their own touch.

Behind the classic façade, you'll find soaring ceilings, polished timber floors, intricate ceiling roses, and colourful stained glass windows ? hallmarks of a bygone era. The light-filled bay-window lounge and adjoining dining room set the scene for relaxed living and entertaining, while the cosy kitchen nook and walk-in pantry with rustic barn doors offer a hint of country charm.

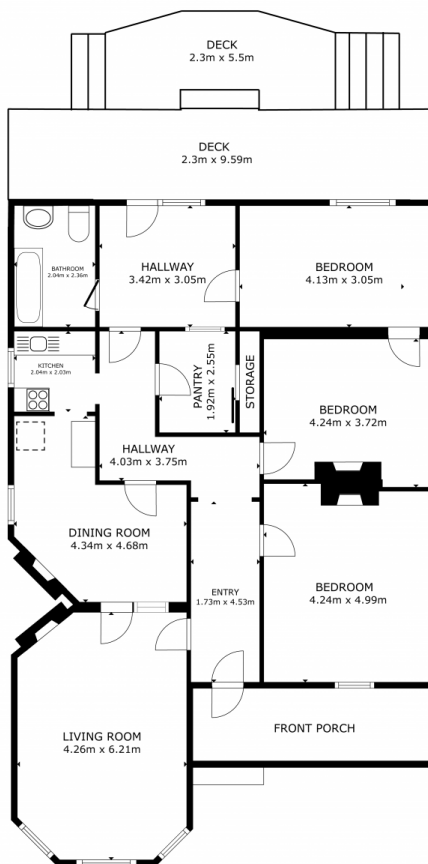
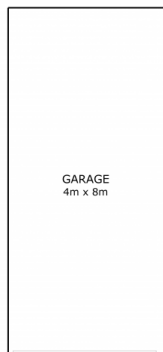
Three spacious bedrooms, a traditional clawfoot bath, and a sunny north-facing deck complete the picture. Outside, enjoy an established garden, greenhouse, garage, and

**Type** : House  
**Building Size** : 139 sqm  
**Land Size** : 783 sqm  
**View** : <https://www.4one4.com.au/property/64-a-bbottsfield-road-claremont-tas/8346992>



**Marilyn Rooney**  
0408 579 454

[For full version visit the website](https://www.4one4.com.au)



**CLAREMONT. 64 Abbotsfield Road**

GROSS INTERNAL AREA  
GARAGE 32 m<sup>2</sup>  
DECK 34.70 m<sup>2</sup>  
FLOOR PLAN 137.2 m<sup>2</sup>  
TOTAL : 203.90 m<sup>2</sup>

SIZES AND DIMENSIONS ARE APPROXIMATE, ACTUAL MAY VARY.

**4ONE4. PROPERTY CO.**