



Units 11/1 Corvalis Lane Cambridge TAS

3 🚗

FINAL ONE LEFT - UNIT 11 (TWO SOLD)

UNITS:

- Unit 10, 1 Corvalis Lane, Cambridge - 301m²
*****SOLD*****
- Unit 11, 1 Corvalis Lane, Cambridge - 301m²
*****AVAILABLE*****
- Unit 12, 1 Corvalis Lane, Cambridge - 379m²
*****SOLD*****

Type : Industrial
Price : Contact agent
Building Size : 301 sqm
View : <https://www.4one4.com.au/property/unit-s-111-corvalis-lane-cambridge-tas/8375401>

Key details:

- ? Floor area: 301m²
- ? Car spaces: 3 (3-4 parks per unit)
- ? Tenure: Vacant possession



Paul O'Loughlin
0418 798 059

[For full version visit the website](https://www.4one4.com.au)

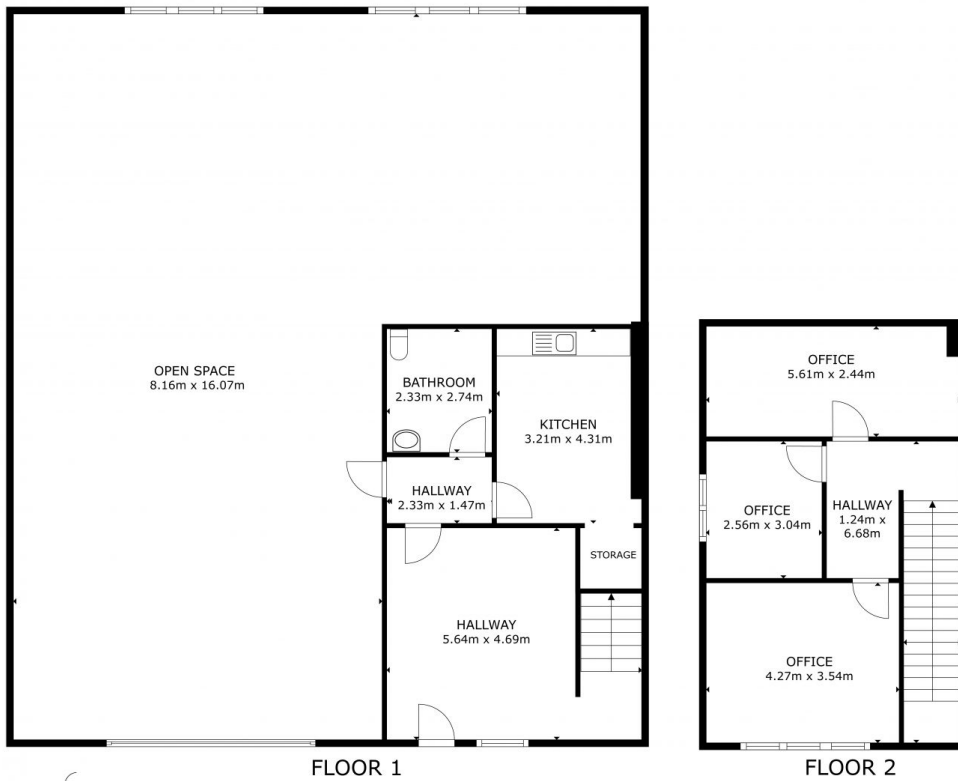


CAMBRIDGE. 10,11,12/1 Corvalis Lane

GROSS INTERNAL AREA
 UNIT 10 : 271.8 m²
 UNIT 11 : 271.8 m²
 UNIT 12 : 404.05 m²
 TOTAL : 947.65 m²

SIZES AND DIMENSIONS ARE APPROXIMATE, ACTUAL MAY VARY.

4ONE4. PROPERTY CO.



CAMBRIDGE. 10/1 Corvalis Lane

GROSS INTERNAL AREA
 FLOOR 1 219.8 m² FLOOR 2 52.0 m²
 TOTAL : 271.8 m²

SIZES AND DIMENSIONS ARE APPROXIMATE, ACTUAL MAY VARY.

4ONE4. PROPERTY CO.