



4/31 Bournville Crescent CLAREMONT TAS

2 1 1

Originally built to house executives of the Cadbury's Factory, 31 Bournville Crescent were once the only residential units available for private ownership on Cadbury's Estate.

With a private deck with views overlooking the water, undercover parking, open living and 2 bedrooms, this low maintenance unit is a phenomenal opportunity for those that are looking for a cosy and secure home to retreat before having to face the world for another day.

What you'll love:

* Set in the exclusive Cadburys Estate with community tennis court, football oval, bowls club & golf course

[For full version visit the website](https://www.4one4.com.au/property/431-bournville-crescent-claremont-tas/8497771)

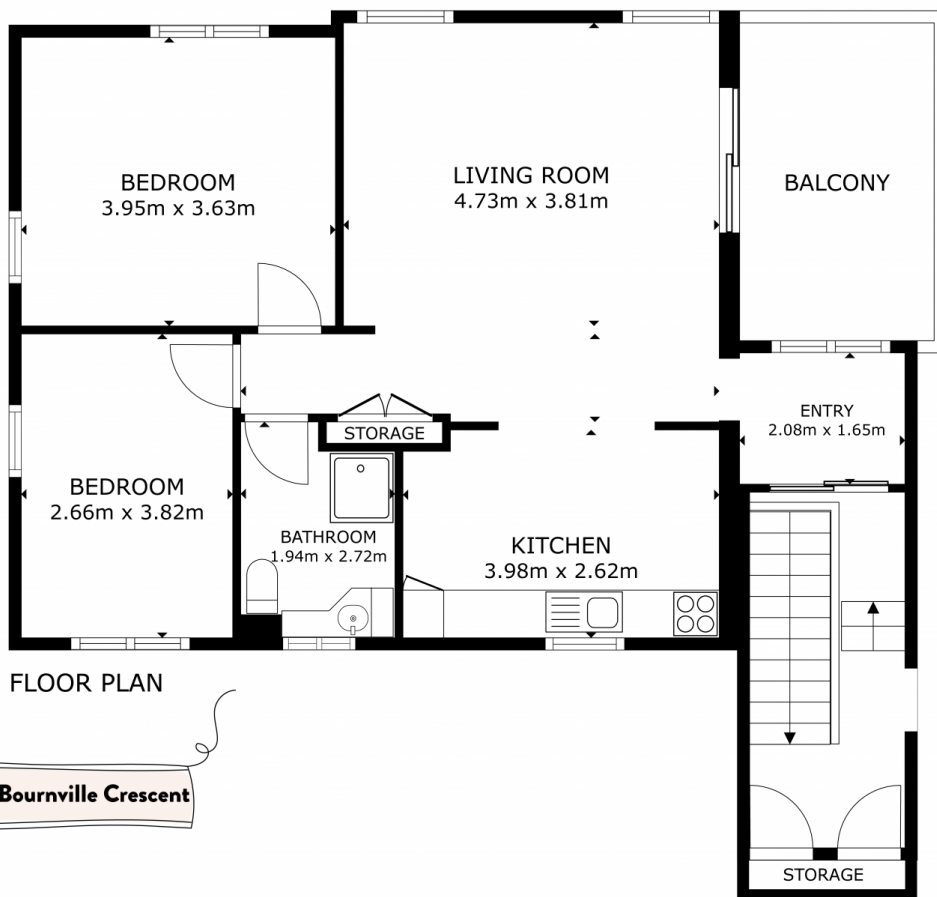
Type : Apartment
Price : \$ 410,000
Building Size : 77 sqm
Land Size : 77 sqm
View : <https://www.4one4.com.au/property/431-bournville-crescent-claremont-tas/8497771>



John McGregor
0410 993 104



Rhys Burden
04000 49630



CLAREMONT. 4/31 Bournville Crescent

GROSS INTERNAL AREA
FLOOR PLAN 67.2 m²
BALCONY 9.8 m²
TOTAL : 77 m²

SIZES AND DIMENSIONS ARE APPROXIMATE, ACTUAL MAY VARY.