



3 Mitchell Avenue Rosetta TAS

3 1 2

Nestled in the serene suburb of Rosetta, this charming three-bedroom home offers a unique blend of vintage appeal and modern convenience. Built in 1962, the property exudes a timeless character that is sure to capture your heart. With around 150 square meters of living space, you'll have ample room for both relaxation and entertaining. Whether you are a first-time buyer or looking to expand your family, this home has something to offer everyone.

Type : House
Building Size : 150 sqm
Land Size : 599 sqm
View : <https://www.4one4.com.au/property/3-mitchell-avenue-rosetta-tas/8616209>

What You'll Love:

- * Generous Living: A generous floorplan, with multiple living areas offering plenty of room for families or first-time buyers.
- * Prime Location: Situated in the serene, sought-after

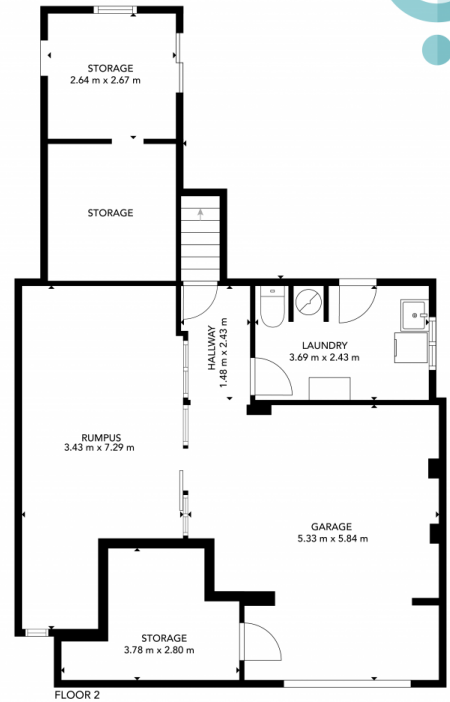
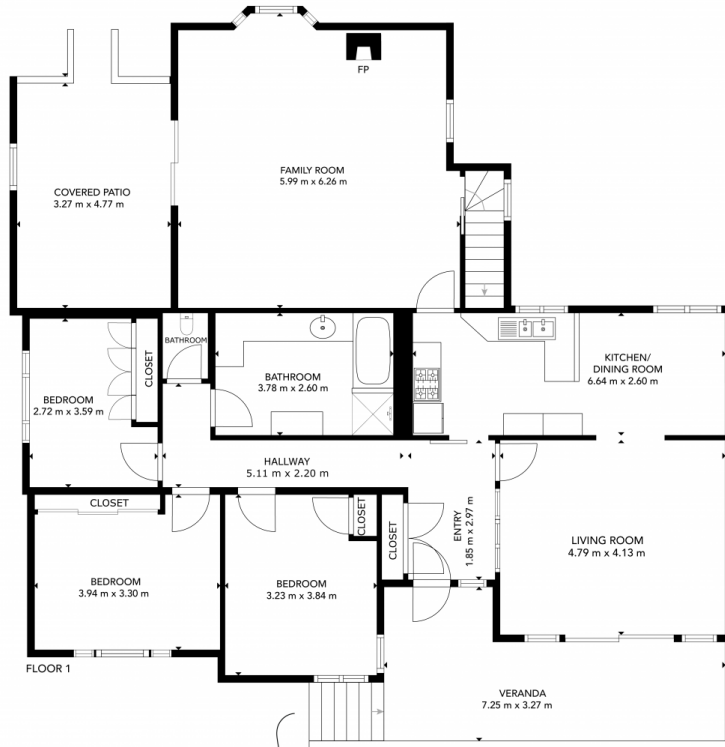
[For full version visit the website](#)



John McGregor
0419 892 104



Patrick Berry
0362 737 414



ROSETTA. 3 Mitchell Avenue

GROSS INTERNAL AREA
 FLOOR 1: 62 m² FLOOR 2: 139 m²
 GARAGE: 28 m² PATIO: 168 m²
 VERANDA: 19 m² COVERED PATIO: 15 m²
 TOTAL: 431 m²

SIZES AND DIMENSIONS ARE APPROXIMATE, ACTUAL MAY VARY.

4ONE4. PROPERTY CO.