

**15 Wattle Avenue Lutana TAS**

3 3 2

15 Wattle Avenue is a property that is set up for those who would rather spend quality time at home than at the chasing the city night lights, a home for people who prefer to host the party rather than tag along.

Starting from the large living room with a north west aspect ensuring you get plenty of sun, open kitchen & dining area, out to the patio and up to the incredible games area fully equipped with a bar, kitchenette, bathroom & inside pool.

Whether you want to shut the doors for separation or open up the whole house, your options are endless when it comes to making the most of every situation.

For your private enjoyment there are 3 bedrooms, the

[For full version visit the website](https://www.4one4.com.au/property/15-wattle-avenue-lutana-tas/8628954)

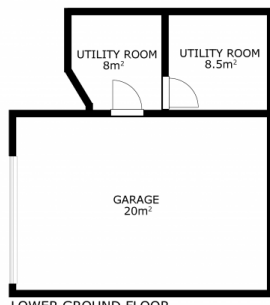
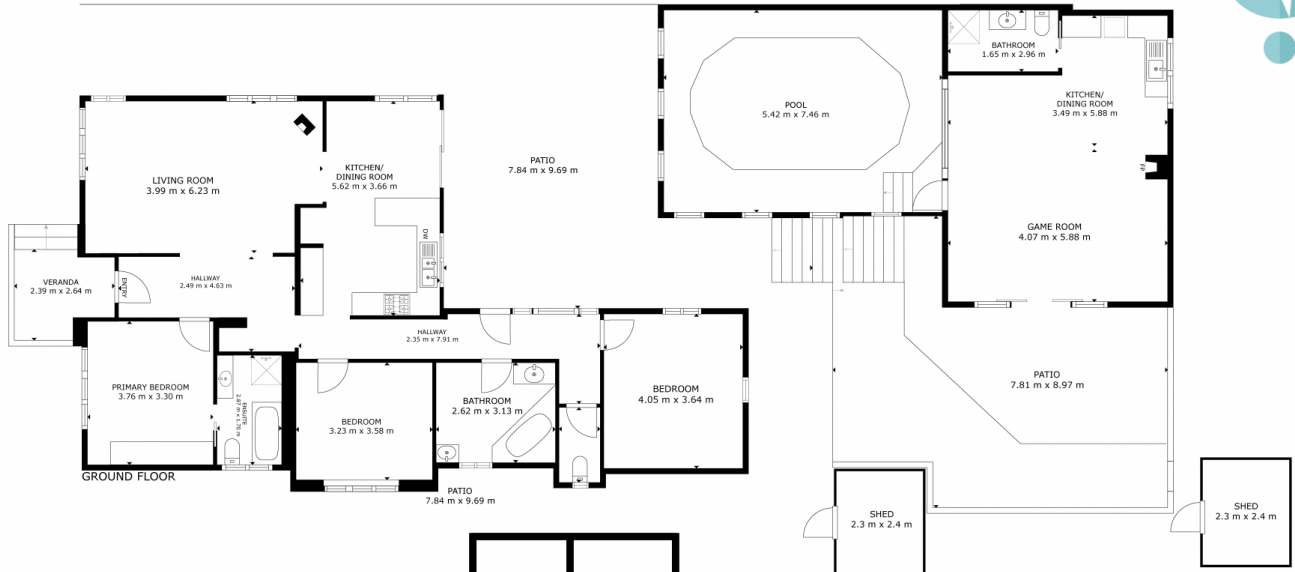
**Type** : House  
**Price** : Offers Over \$775,000  
**Building Size** : 198 sqm  
**Land Size** : 584 sqm  
**View** : <https://www.4one4.com.au/property/15-wattle-avenue-lutana-tas/8628954>



**John McGregor**  
0419 892 104



**Rhys Burden**  
0490949630



**LUTANA. 15 Wattle Avenue**

GROSS INTERNAL AREA  
 GROND FLOOR: 198 m<sup>2</sup>, LOWER GROUND FLOOR: 36.5 m<sup>2</sup>  
 PATIO: 52 m<sup>2</sup>, VERANDA: 6 m<sup>2</sup>  
 SHEDS: 11.04 m<sup>2</sup>  
 TOTAL: 303.54 m<sup>2</sup>  
 SIZES AND DIMENSIONS ARE APPROXIMATE, ACTUAL MAY VARY.

