

**1/40 Emerald Drive Rokeby TAS**

3 2 2

Welcome to a modern home nestled in the vibrant community of Rokeby. This spacious unit on Emerald Drive offers a perfect blend of comfort and convenience. Tenanted until August, the property is ideal for investors, first home buyers, and everyone in between. Built in 2021, the unit boasts modern contemporary finishes and a thoughtful layout that maximizes space across its 108m<sup>2</sup> build area. With three bedrooms, two bathrooms, spacious & sunny open plan living, high ceilings, quality fittings throughout, and even your own EV charger, this property is sure to impress.

Rokeby is a suburb that has become increasingly popular due to its proximity to essential amenities. You'll find yourself just a short walk away from the local Glebe Hill

[For full version visit the website](https://www.4one4.com.au)

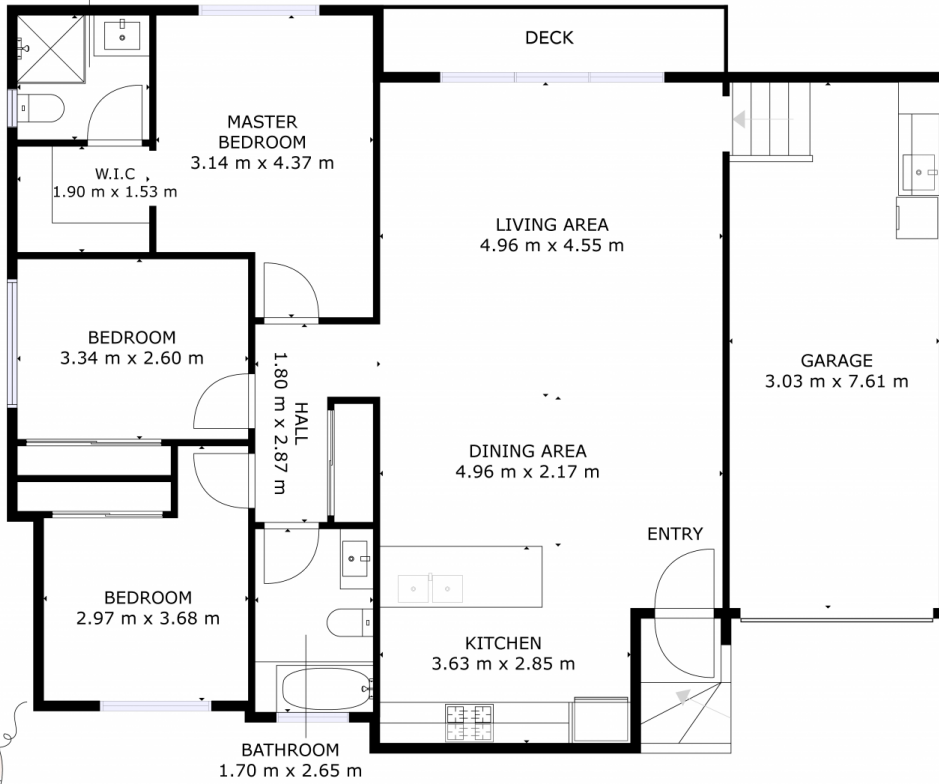
**Type** : Unit  
**Price** : \$ 685,000  
**Building Size** : 108 sqm  
**Land Size** : 255 sqm  
**View** : <https://www.4one4.com.au/property/140-emerald-drive-rokeby-tas/8649619>



**Martin Evans**  
 0362 737 414



ENSUITE  
1.90 m x 1.53 m



ROKEBY, 1/4 Emerald Drive

GROSS INTERNAL AREA  
FLOOR: 74m<sup>2</sup>  
GARAGE: 23 m<sup>2</sup>  
TOTAL: 96 m<sup>2</sup>

SIZES AND DIMENSIONS ARE APPROXIMATE, ACTUAL MAY VARY.

20 years OF 4ONE4.