



19 Eclipse Road Austins Ferry TAS

3 1 3

Nestled in a quiet no-through road, this solid and well-presented 2008-built brick family home offers comfort, practicality and a lifestyle enhanced by sweeping panoramic views across the Derwent River and beyond.

Recently updated with new LED lighting, fresh paint in neutral tones and stylish flooring, the home delivers a bright and modern feel throughout, while the inclusion of solar panels adds valuable energy efficiency. The open plan living area is warm and inviting, complete with a reverse cycle split system, and flows seamlessly into a practical kitchen with ample storage, a dishwasher and breakfast bench.

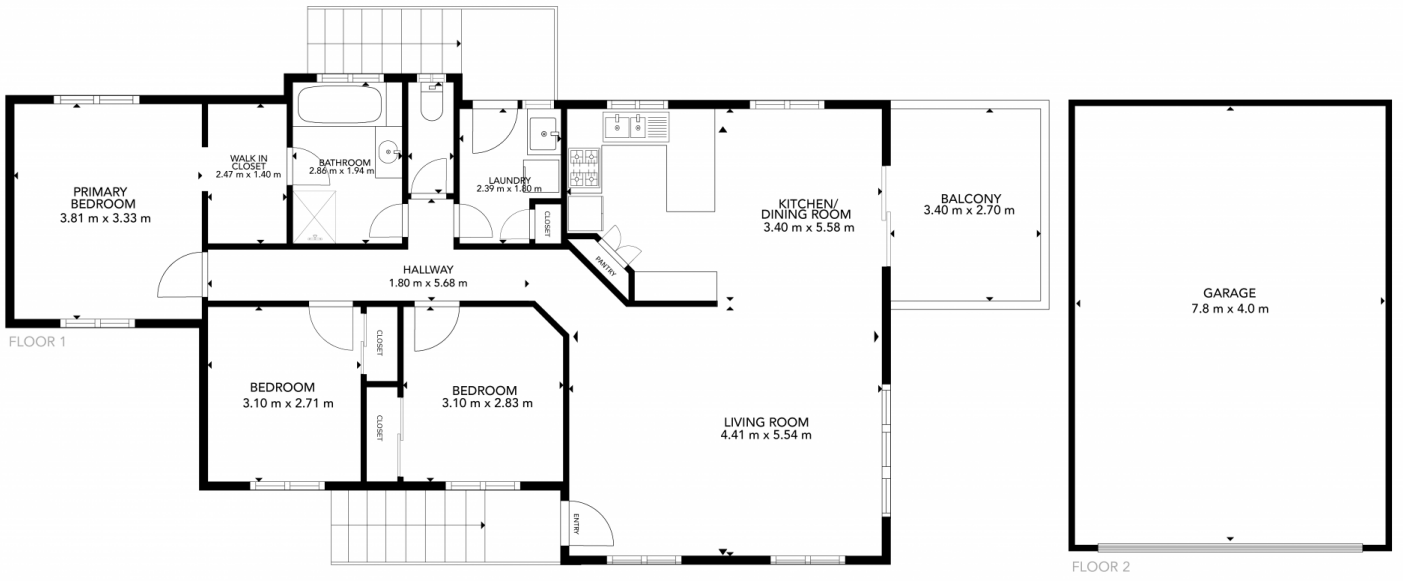
Step outside onto the entertaining deck, where the outlook

[For full version visit the website](#)

Type : House
Building Size : 113 sqm
Land Size : 460 sqm
View : <https://www.4one4.com.au/property/19-eclipse-road-austins-ferry-tas/8681107>



Marilyn Rooney
0408 579 454



AUSTINS FERRY, 19 Eclipse Road

GROSS INTERNAL AREA
FLOOR PLAN: 113 m²
SIZES AND DIMENSIONS ARE APPROXIMATE, ACTUAL MAY VARY.

20.years
OF 4ONE4.