



**116 Berriedale Road Berriedale TAS**

3 1 3

Welcome to this lovely family home, perfectly positioned for convenience and lifestyle, just moments from MONA, local schools, and shopping hubs in Claremont and Glenorchy, and only 12 kilometres from the Hobart CBD.

Freshly updated with new paint and flooring in the lounge, hallway, kitchen and laundry, the home feels light, bright and ready to enjoy from the moment you step inside. The spacious living room offers a welcoming place to relax, complete with a cosy fireplace for the cooler months.

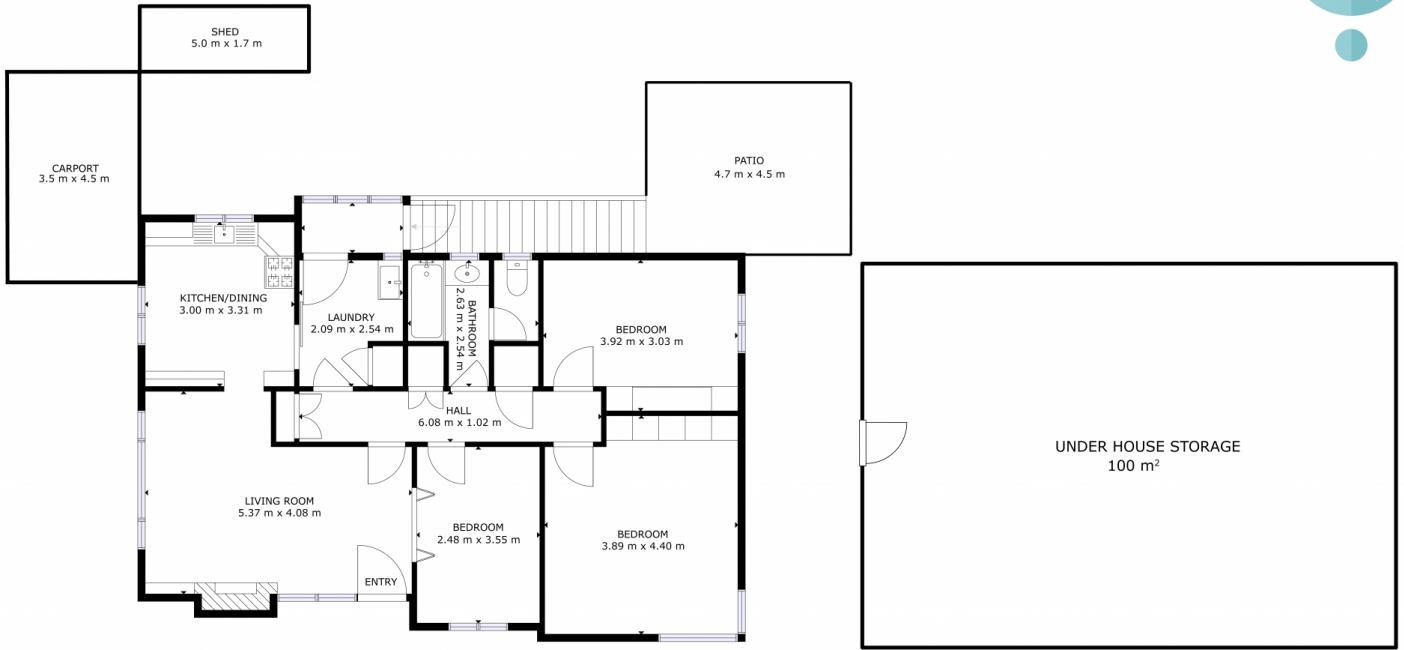
Flowing through, the kitchen and dining area is filled with natural light, providing a practical and inviting space for everyday living.

**Type** : House  
**Price** : Offers over \$575,000  
**Building Size** : 100 sqm  
**Land Size** : 579 sqm  
**View** : <https://www.4one4.com.au/property/116-berriedale-road-berriedale-tas/8692022>



**Marilyn Rooney**  
0408 579 454

[For full version visit the website](https://www.4one4.com.au)



**BERRIEDALE. 116 Berriedale Road**

GROSS INTERNAL AREA  
FLOOR PLAN: 100 m<sup>2</sup>  
CARPORT: 15.75 m<sup>2</sup>, PATIO: 21.15 m<sup>2</sup>, SHED: 8.5 m<sup>2</sup>  
TOTAL: 145.4 m<sup>2</sup>

SIZES AND DIMENSIONS ARE APPROXIMATE, ACTUAL MAY VARY.

