



1/1 Anita Place GLENORCHY TAS

2 1 2

Discover comfortable, low-maintenance living at 1/1 Anita Place, Glenorchy. This two-bedroom unit is easy access to everyday amenities.

The home provides a functional layout across approximately 71 square metres of internal living. An open-plan living area creates a bright and versatile social space adjacent to the kitchen, while two bedrooms offer privacy and restful accommodation. The property includes one bathroom and one toilet, plus a single living area that accommodates both dining and relaxation needs. A notable feature is the two open car parking spaces?rare for unit living?making vehicle ownership simple and convenient.

Situated on a 279 square metre parcel within the Glenorchy

[For full version visit the website](https://www.4one4.com.au/property/11-anita-place-glenorchy-tas/8692049)

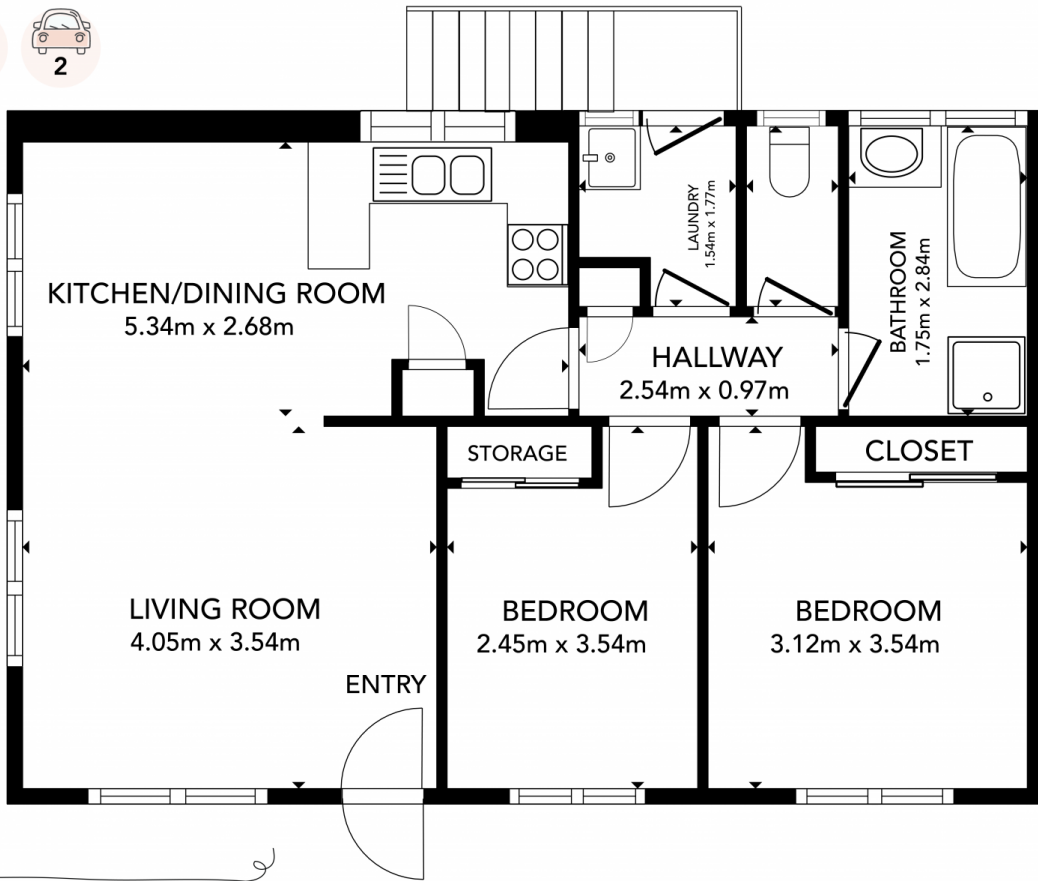
Type : Unit
Price : \$ 520 per week
Building Size : 71 sqm
Land Size : 279 sqm
View : <https://www.4one4.com.au/property/11-anita-place-glenorchy-tas/8692049>



Hannah Bowerman
03 6273 7414



Georgia Webster
03 6273 7414



GLENORCHY. 1/1 Anita Place
GROSS INTERNAL AREA
FLOOR PLAN 63 m²

